

# ***Pokini***

## **Rugged Notebook N14**

### User Manual



# Table of Contents

BEFORE YOU START .....	5
PACKAGE CONTENTS .....	5
PRODUCT OVERVIEW .....	6
<i>Front View</i> .....	6
<i>Back View</i> .....	7
<i>Right View</i> .....	8
<i>Left View</i> .....	9
<i>Rear View</i> .....	10
STATUS INDICATORS .....	11
<b>GETTING STARTED .....</b>	<b>12</b>
INSTALLING THE BATTERY .....	12
<i>Charging the Battery</i> .....	13
<i>Charging Time</i> .....	13
<i>Checking the Battery Level</i> .....	13
<i>When to replace the Battery Pack</i> .....	14
<i>Removing the Battery</i> .....	14
CONNECTING THE POWER .....	15
<i>Connecting the AC Adapter</i> .....	15
<i>Using Battery Power</i> .....	15
STARTING YOUR NOTEBOOK .....	16
<i>Turning On Your Device</i> .....	16
<i>Turning Off Your Device</i> .....	16
USING THE KEYBOARD .....	17
USING THE TOUCH PAD .....	18
<b>OPERATING YOUR NOTEBOOK .....</b>	<b>19</b>
USING THE QUICK MENU .....	19
<i>Quick Menu Overview</i> .....	19
<i>Viewing the Version Information</i> .....	20
<i>Viewing the Battery Charge Cycles</i> .....	20
<i>Configuring the Programmable Button (P1)</i> .....	20
<i>Configuring the Programmable Button (P2)</i> .....	21
<i>Assigning an Application to the P1/P2 Button</i> .....	21
<i>Accessing the Mobility Center</i> .....	22
<i>Configuring the Touchscreen Settings</i> .....	23
<i>Configuring External Antenna Switching Mode</i> .....	24
USING THE CAMERA .....	25
<i>Opening Camera App</i> .....	25
<i>Taking Photos</i> .....	26
<i>Recording Videos</i> .....	27
<i>Adjusting Brightness</i> .....	28

Setting Photo Timer .....	29
Configuring Camera Settings .....	29
Viewing Photos/Videos .....	30

## **MAKING CONNECTIONS ..... 31**

INSTALLING THE MEMORY CARD .....	31
INSTALLING THE SIM CARD .....	32
INSTALLING THE SMART CARD .....	35
USING THE OPTICAL DISK DRIVE .....	36
<i>Placing a Disc</i> .....	36
CONNECTING THE MICROPHONE/HEADSET .....	37
CONNECTING USB DEVICES .....	38
CONNECTING TO EXTERNAL DISPLAYS .....	39
CONNECTING TO A LOCAL AREA NETWORK (LAN) .....	40
REPLACING THE HARD DISK DRIVE (HDD) .....	41
CONNECTING TO WIRELESS CONNECTIONS .....	42

## **USING THE BIOS SETUP UTILITY ..... 50**

BIOS SETUP MENU .....	50
MAIN MENU .....	52
ADVANCED MENU .....	53
BOOT MENU .....	58
SECURITY MENU .....	59
SAVE & EXIT MENU .....	60

## **MAINTAINING AND CARING FOR YOUR NOTEBOOK..... 61**

PROTECTING YOUR NOTEBOOK .....	61
STORING AND HANDLING YOUR NOTEBOOK .....	61
CLEANING YOUR NOTEBOOK .....	63
TRAVELING WITH YOUR NOTEBOOK .....	64

## **TROUBLESHOOTING..... 65**

PRELIMINARY CHECKLIST .....	65
SOLVING COMMON PROBLEMS .....	65
DISPLAY PROBLEMS .....	67
HARD DISK PROBLEMS .....	68
OTHER PROBLEMS .....	72

## **APPENDIX ..... 73**

COPYRIGHT .....	73
SPECIFICATIONS .....	73
REGULATORY STATEMENT .....	76
<i>Federal Communications Commission Statement</i> .....	76

<i>Declaration of Conformity</i> .....	76
<i>RF exposure warning</i> .....	77
<i>Battery Disposal</i> .....	77
<i>WARNING EXPLOSION HAZARD</i> .....	77
<i>CLASS 1 LASER PRODUCT</i> .....	78
<b>SAFETY INSTRUCTIONS</b> .....	<b>80</b>

# Before You Start

Congratulations on your purchase of this notebook.

This semi-rugged notebook is portable and provides users with maximum mobile computing experience in a wide range of working environments. Before you begin using your notebook, read this chapter to familiarize yourself with the main components installed in the system.

## Package Contents

If any of the following items is damaged, please contact your retailer.



Notebook



Power cord



- DC 19V 65W power adapter (standard SKU)
- DC 19V 120W power adapter (optional, for Discrete Graphics SKU)



Standard 9-cell Li-ion  
Battery



### NOTE

- These pictures are for reference only. Actual items may slightly differ.
- Declaration of product weight: 2.4kg. The actual weight may vary by configuration.

# Product Overview

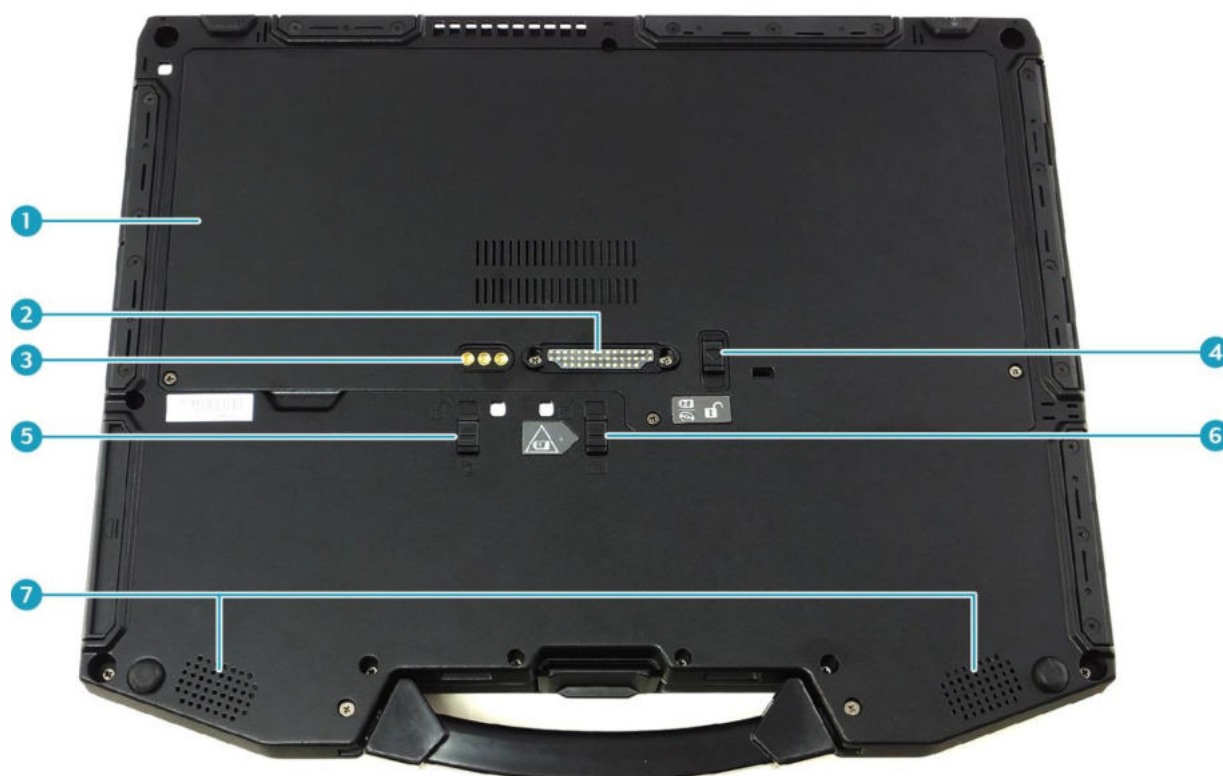
## Front View



No.	Item	Description
1	Front camera	Use to take pictures, record videos, or video conference.
2	Camera cover	Protects the camera.
3	Microphones	Records the surrounding sound.
4	Display screen	Optional capacitive touch panel.
5	Programmable buttons (P1/P2)	Press to enter the chosen program (user definition)
6		
7	Status indicators	Indicates the corresponding function status.
8	Power button	Press to turn your notebook on or off.
9	Waterproof keyboard	Press the keys to input information.

No.	Item	Description
10	Fingerprint scanner	Scans fingerprints for biometric identification.
11	Touch pad	Use to point, select, drag, or scroll objects on the screen.
12	Touch pad button	Press to select objects or display a shortcut menu.

## Back View



No.	Item	Description
1	CTO door	Remove the door to access the SIM card slot.
2	Docking connector	Connects the notebook to a docking station.
3	RF Pass-thru connectors (x3) (optional)	Use for the external antenna of WWAN, GPS, and WLAN.
4	ODD/Battery latch release button	Slide and hold the button to disengage the ODD/battery connector.
5	HDD latch release button	Slide and hold the button to disengage the HDD connector.

## Before You Start

No.	Item	Description
6	Battery latch release button	Slide and hold the button to disengage the battery connector.
7	Speakers	Emits sound.

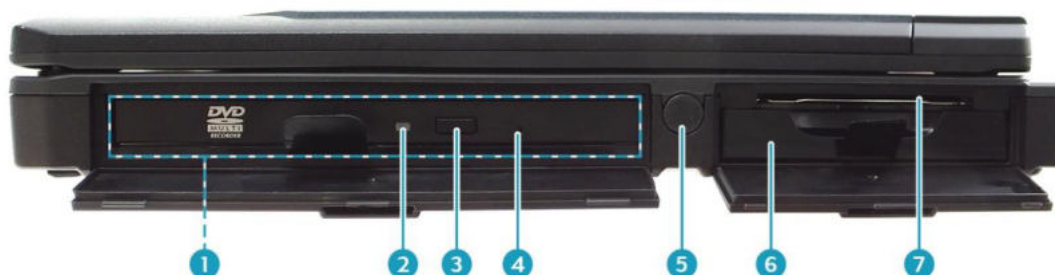
## Right View



No.	Item	Description
1	HDD compartment	Contains the hard disk drive.
2	Audio Combo jack	Connects to headphones, external speakers, or microphone.
3	Card reader	Use to insert memory cards to transfer pictures, music, and data between your notebook and flash compatible devices. The card reader supports SD (Secure Digital), SDXC, Mini-SD (with adapter).
4	RF Signal Slide-Switch	Slide the switch to enable/disable the RF functions.
5	USB 2.0 port	Connects to USB 2.0 peripheral devices.
6	USB 3.1 (Gen 1) port	Connects to USB 3.0 peripheral devices.
7	USB 3.1 (Gen 1) port	Supports USB charging when the system is off (DC mode only).
8	DC-in jack	Connects to the power adapter.



## Left View



No.	Item	Description
1	Media bay	Varies depending on SKU: <ul style="list-style-type: none"> <li>• Optical disk drive</li> <li>• Second battery pack</li> <li>• Express Card 54 slot x 1 and PCMCIA Type II x 1; or PCMCIA Type II x 2</li> </ul>
2	ODD LED indicator (for ODD SKU)	A blinking ODD LED indicates ODD activity.
3	Eject button (for ODD SKU)	Push to open the tray.
4	Pin Hole Eject (for ODD SKU)	If the <b>Eject</b> button fails to work properly, insert a paper clip into this hole to open the tray.  <b>CAUTION!</b> <b>Turn off the notebook before performing manual ejection.</b>
5	Stylus compartment	Contains the stylus.
6	Battery compartment	Contains the battery.
7	Smart card reader	Use to insert smart cards.

## Rear View



No.	Item	Description
1	HDMI port or optional Mini DP port x2	<ul style="list-style-type: none"><li>• HDMI port: Connects to an HDMI device such as an external HDMI LCD TV.</li><li>• Mini DP port: Connects to an external display.</li></ul>
2	USB 2.0 port	Connects to USB 2.0 peripheral devices.
3	Kensington lock slot	Connects to a Kensington-compatible notebook security lock.
4	VGA port	Connects to peripheral devices, such as an external monitor/projector.
5	RS-232 port	Connects to serial peripheral devices.
6	RJ-45 port	Connects to a local area network (LAN) using an Ethernet cable.

# Status Indicators

The status indicators light up when a particular function of the notebook is active. Each indicator is marked with a symbol.



Icon	Item	Description
	Power	The LED light stays on (blue) when the system is running. When the system is in sleep mode, the LED blinks.
	Battery	Indicates the battery status: <ul style="list-style-type: none"> <li>Green: when the battery is fully charged (95% or above)</li> <li>Orange: when the battery is charging</li> <li>Flashing orange: charging error</li> <li>Red: when the battery capacity is lower than 7%</li> <li>Off: when discharged</li> </ul>
	RF LED	Indicates the wireless connection status: <ul style="list-style-type: none"> <li>Blue: Any of the RF features (WLAN/Bluetooth/WWAN) are activated.</li> <li>Off: None of the RF features (WLAN/Bluetooth/WWAN) are activated.</li> </ul>
	Wired LAN	Indicates the wired network connection status: <ul style="list-style-type: none"> <li>Green: a link is established</li> <li>Flashing Green: when there is activity on the port</li> </ul>
	Storage	Lights up (green) when the HDD/SSD/ODD is accessing data.
	Num Lock	Lights up (green) when Num Lock is activated.
	Caps Lock	Lights up (green) when Caps Lock is activated.

# Getting Started

This chapter will help you get started using the device.

## CAUTION!

***Before any internal installation procedures are carried out on the system, make sure the system is turned off and cooled down for 5 minutes. Failing to turn off the system before opening it can cause permanent damage to the system and serious or fatal injury to the user.***

## Installing the Battery

To install the battery, follow the steps below:

1. Open the battery compartment cover.
2. Insert the battery into the battery compartment, as shown in the image below.



3. Push completely until the battery locks into place.
4. Close the battery compartment cover.



## Charging the Battery

The Li-Ion battery is not fully-charged upon purchase.

To charge the battery, follow the steps below:

1. Install the battery into your notebook. See procedures above.
2. Connect the AC adapter to the DC-in jack on your notebook.
3. Connect the AC adapter to the power cord.
4. Plug the power cord into an electrical outlet.

## Charging Time

It takes approximately 3.5 hours (at 25°C) to fully charge the battery.



### NOTE

- The charging time may be longer if you are using your notebook while charging the battery.

### CAUTION!

- ***DO NOT charge the battery if the temperature is below 0°C or higher than 45°C.***
- ***Use only the supplied AC adapter. Using other AC adapters may damage the battery or your notebook.***

## Checking the Battery Level

It is important that you monitor the battery status regularly to ensure you do not run out of power at a critical moment.

To check the remaining battery power, double-tap the battery icon (🔋) on the system tray.



The battery screen appears:



# When to replace the Battery Pack

The battery performance gradually decreases over time and usage. We recommend you replace your battery pack after 18 to 24 months of usage.

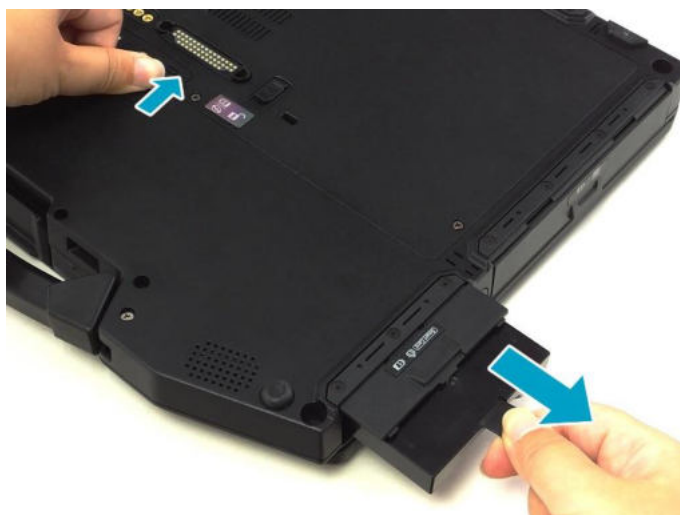
## Removing the Battery

To remove the battery, follow the steps below:

1. Open the battery compartment cover.



2. Slide the battery latch release button upwards and hold it in place. Then pull the battery out to disengage it from its compartment.



3. Pull the battery out of the battery compartment.

# Connecting the Power

Your notebook can be powered up using the AC adapter or the Lithium-ion battery.

## Connecting the AC Adapter

The AC adapter powers up your notebook and charges the battery.



1. Connect the AC adapter to the DC-in jack on your notebook.
2. Connect the AC adapter to the power cord.
3. Plug the power cord to an electrical outlet.

## Using Battery Power

1. Install the charged battery in the battery compartment.
2. Remove the AC adapter (if plugged in). Your notebook will automatically use the battery power.



### **NOTE**


- If your notebook is connected to an electrical outlet and the battery is installed, your notebook uses power from the electrical outlet.

# Starting Your Notebook

## Turning On Your Device

1. To open the display panel, unlock the chassis latch to open the notebook chassis.



2. Lift the cover lid to upright position.
3. Press the  button until the Power LED lights up.



### TIP

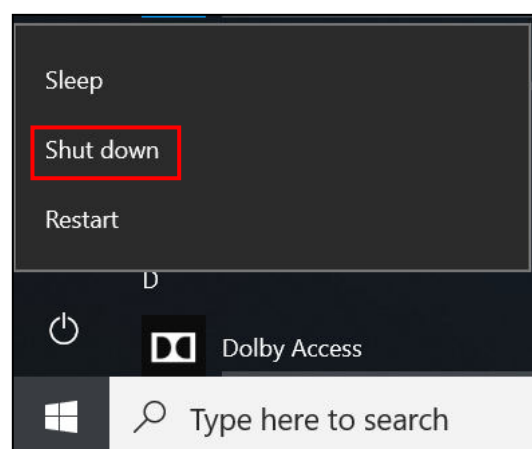
Besides using the keyboard or touch pad for operations on your notebook, you can also use a mouse. To use a wired mouse, simply plug it into an available USB port.

## Turning Off Your Device

It is important to properly shut down your notebook to avoid the loss of unsaved data. To shut down your notebook, do the following:

Tap  >  > **Shut down**.

Wait for your notebook to power off completely before removing the power source (if necessary).





# Using the Keyboard



No.	Keys	Description
1	Function keys	These function keys are used to perform designated tasks. The tasks for each key may vary from one application to another.
2	[Fn]	Press the [Fn] key in combination with other keys to execute a command.
	[Fn] + F1	Toggles the touch pad to on/off.
	[Fn] + F2	Toggles between LCD, External display, or both.
	[Fn] + F3	Switches to suspend mode.
	[Fn] + F6	Decreases the brightness level.
	[Fn] + F7	Increases the brightness level.
	[Fn] + F8	Decreases the volume by one level.
	[Fn] + F9	Increases the volume by one level.
	[Fn] + F10	Turns on or mutes the volume.
3	Windows key	Press to display the <b>Start</b> menu. This action is the same as tapping the Start icon.

## Getting Started

4	Numeric keypad	Press the <b>NumLk</b> key to activate the numeric keypad. Press the keys on the numeric keypad to enter numbers or operands as you would on a calculator.
5	Application key	Press to display an application shortcut menu. This action is the same as right-clicking a mouse button.

# Using the Touch Pad

The touch pad is a cursor-pointing device that provides all the features of a two-button mouse. Its primary function is to move the cursor around the screen. You can also point, select, or drag items or objects on the screen.



### Point

Slide your finger on the touch pad to point the cursor to an item or object on the screen.

### Click

To left-click, move the cursor to the item or object on the screen, then lightly tap the touch pad or press the left button.

To right-click, move the cursor to the item or object on the screen, then press the right button.

### Double-click

To double-click, move the cursor to the item or object on the screen, then tap the touch pad twice or press the left button twice.

### Drag

To drag an item or object, press and hold the left button then slide your finger on the touch pad to move the item or object.

### Scroll

To scroll a page, press and hold the left button then slide your finger on the touch pad to scroll.

# Operating Your Notebook

This chapter will guide you through how to use your notebook.

## Using the Quick Menu

To enter the Quick menu, tap the Quick Menu icon (⚙️) on the task bar.




You can also access the Quick menu in the *All apps* list.

## Quick Menu Overview



### NOTE

- If the tab is green (i.e. ) , this indicates the current function is activated.

## Viewing the Version Information

In the **Version** section, you can view the Bios version, EC version, and Quick Menu version.



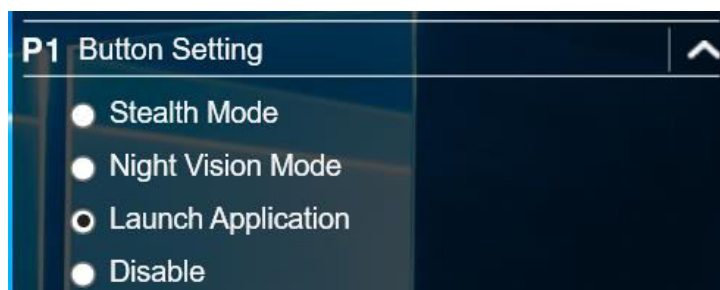
## Viewing the Battery Charge Cycles

In the **Battery Charge Cycles** section, you can view the battery charge cycle and battery status.



## Configuring the Programmable Button (P1)

In the **P1 Button Setting** section, you can assign the function for the **P1** button.

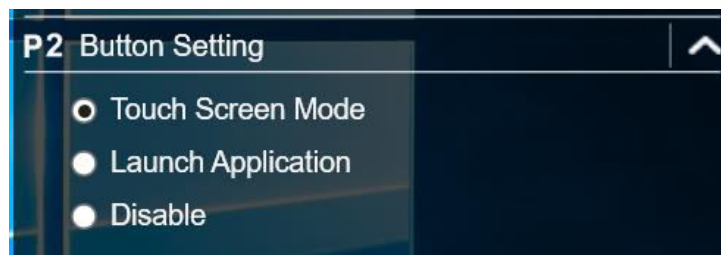


There are three available options:

- **Stealth Mode:** Turns off the LCD backlight, LEDs, speakers, and camera flash.
- **Night Vision Mode:** Adjusts the brightness of the LCD under 1.7 nits and turns off the LEDs and camera flash.
- **Launch Application:** Shortcut key for launching specific applications. To assign the application, refer to the "Assigning an Application to the P1/P2 Button" section.
- **Disable:** No function.

## Configuring the Programmable Button (P2)

On the **P2 Button Setting** section, you can assign the function for the **P2** button.

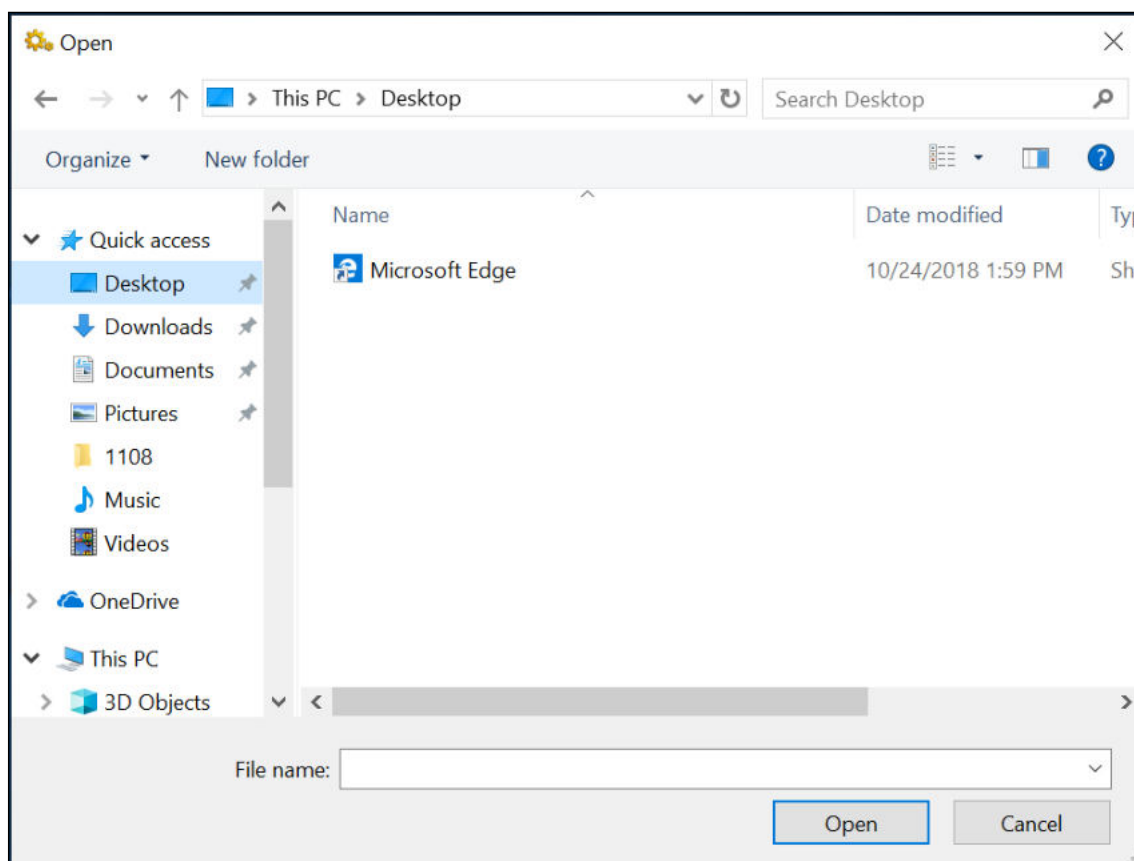


There are four available options:

- **Touch Screen Mode:** Toggles the touch screen mode.
- **Launch Application:** Shortcut key for launching the specific application. To assign the application, refer to the "Assigning an Application to the P1/P2 Button" section.
- **Disable:** No function.

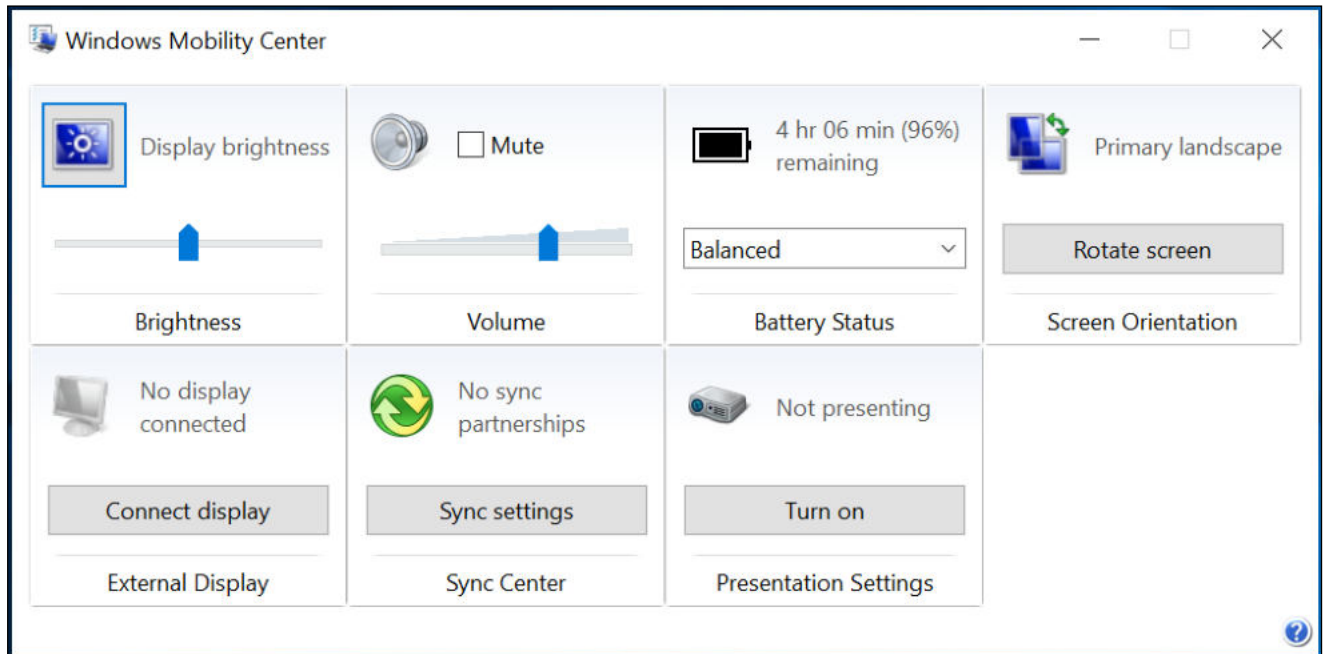
## Assigning an Application to the P1/P2 Button

Tap the **P-Key** tab to assign an application to the **P1** or **P2** button. Select the desired application and tap **Open**.



## Accessing the Mobility Center

Tap the **Mobility Center** tab to adjust or configure the brightness, volume level, mute function, battery status, screen orientation, external display, sync, and presentation settings.



## Configuring the Touchscreen Settings

Your notebook is equipped with a touchscreen. Using the touchscreen, you can navigate the screen by using touch gestures (any input from your finger, a glove, or a stylus).

### CAUTION!

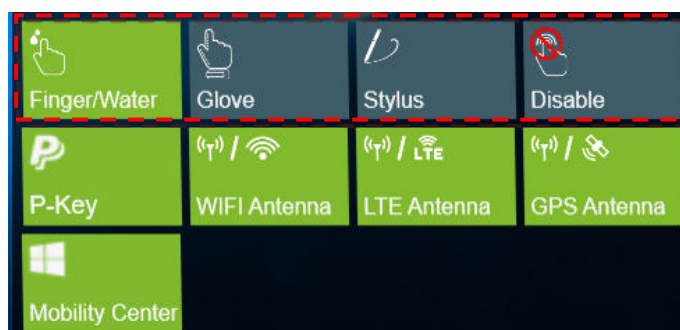
**Do not use any sharp objects, such as a pen or pencil, on the touchscreen to prevent scratches.**



### NOTE

- An optional protective film has been attached to the screen before shipment. You should change the film when it gets worn out.

You can select the desired touch screen mode in the Quick menu.



Select one of the available options:

- : Select **Finger/Water** if you are using your fingertips.
- : Select **Glove** if you are wearing gloves.
- : Select **Stylus** if you are using a stylus.
- : Select **Disable** to disable the touch function.

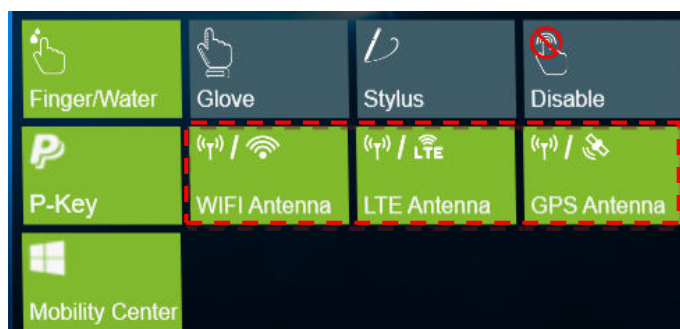


### NOTE

- If the touchscreen mode is set to **Glove** or **Stylus** and the touchscreen is wet (i.e. from a spilled liquid), the touch function will not respond to any input. Make sure to keep the screen dry to ensure proper operation.
- If you assign the **P2** button as **Touch Screen Mode** (refer to page 21), you can easily switch the touchscreen mode by simply pressing the **P2** button.

## Configuring External Antenna Switching Mode

Select the respective external antenna tab to configure the setting.



- Tap the **WIFI Antenna** tab to enable/disable the device to automatically switch to the external WLAN antenna when it is affixed on a docking station.
- Tap the **LTE Antenna** tab to enable/disable the device to automatically switch to the external WWAN antenna when it is affixed on a docking station.
- Tap the **GPS Antenna** tab to enable/disable the device to automatically switch to the external GPS antenna when it is affixed on a docking station.



### NOTE

- If the tab is green, this indicates the current function is activated.




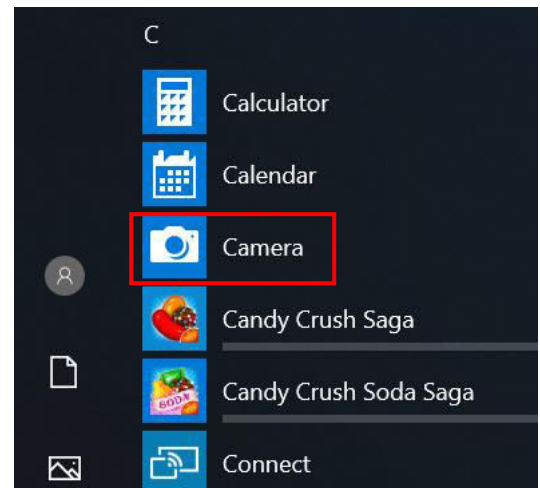
# Using the Camera

Using the Camera application, you can use this notebook to take photos or videos.

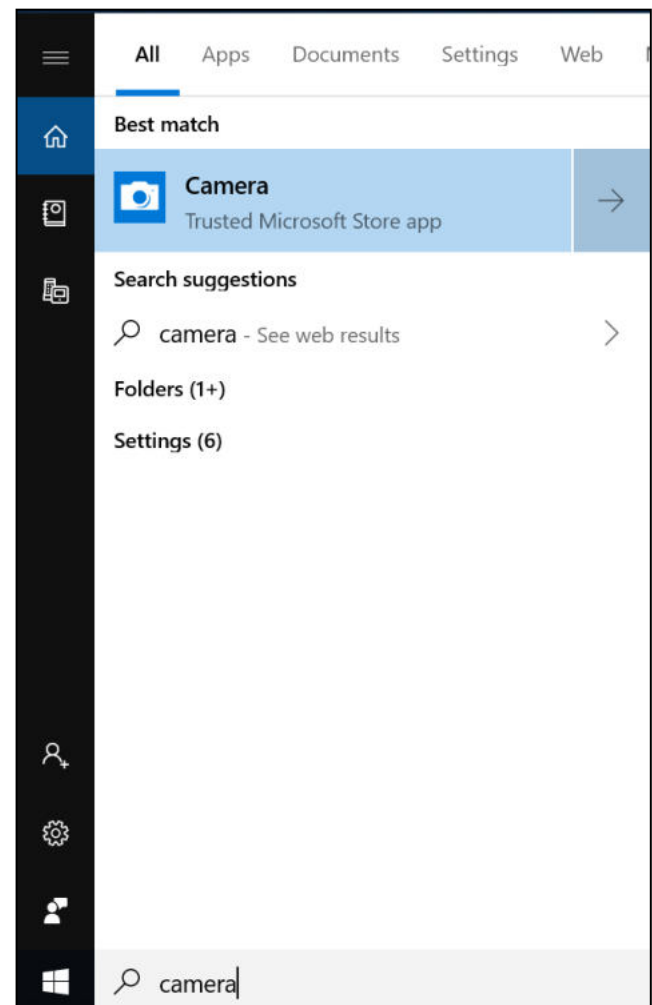
## Opening Camera App

To access the Camera application, do one the following:

- a. Tap  > **Camera**.

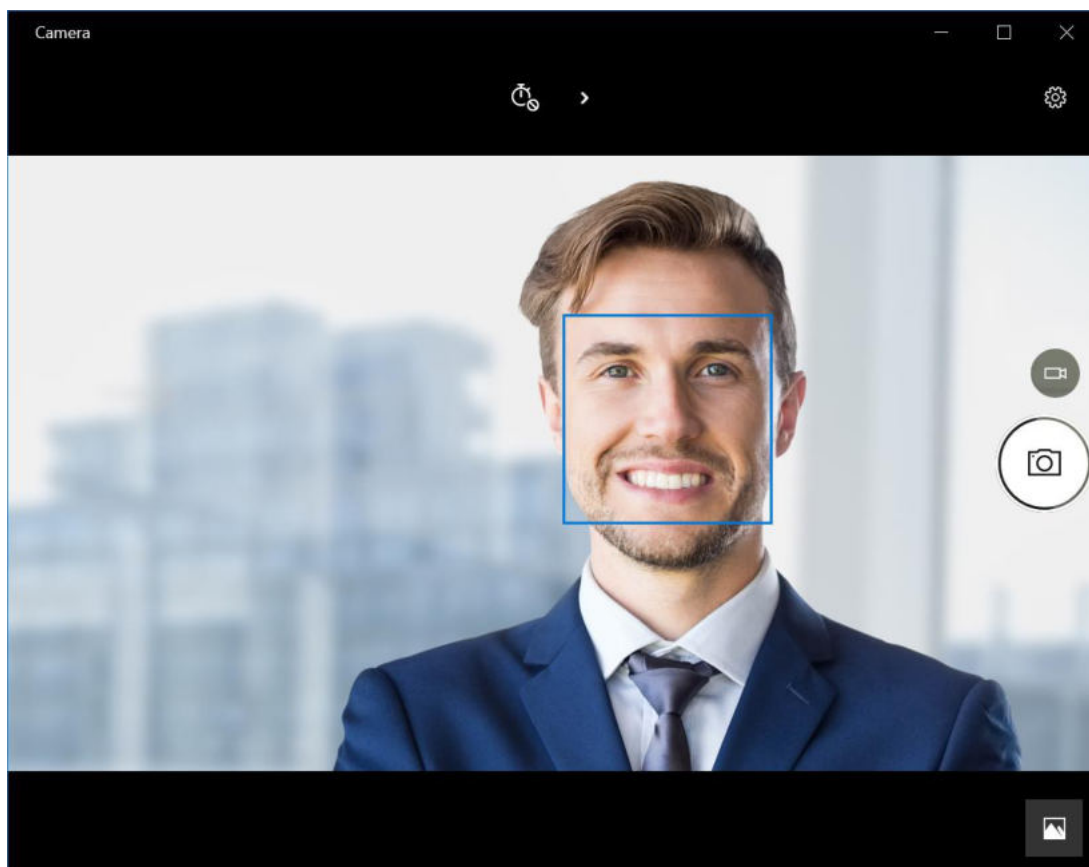


- b. In the Cortana search box, enter 'camera'. Then tap **Camera**.



## Taking Photos



Tap  to capture a photo.





## Recording Videos

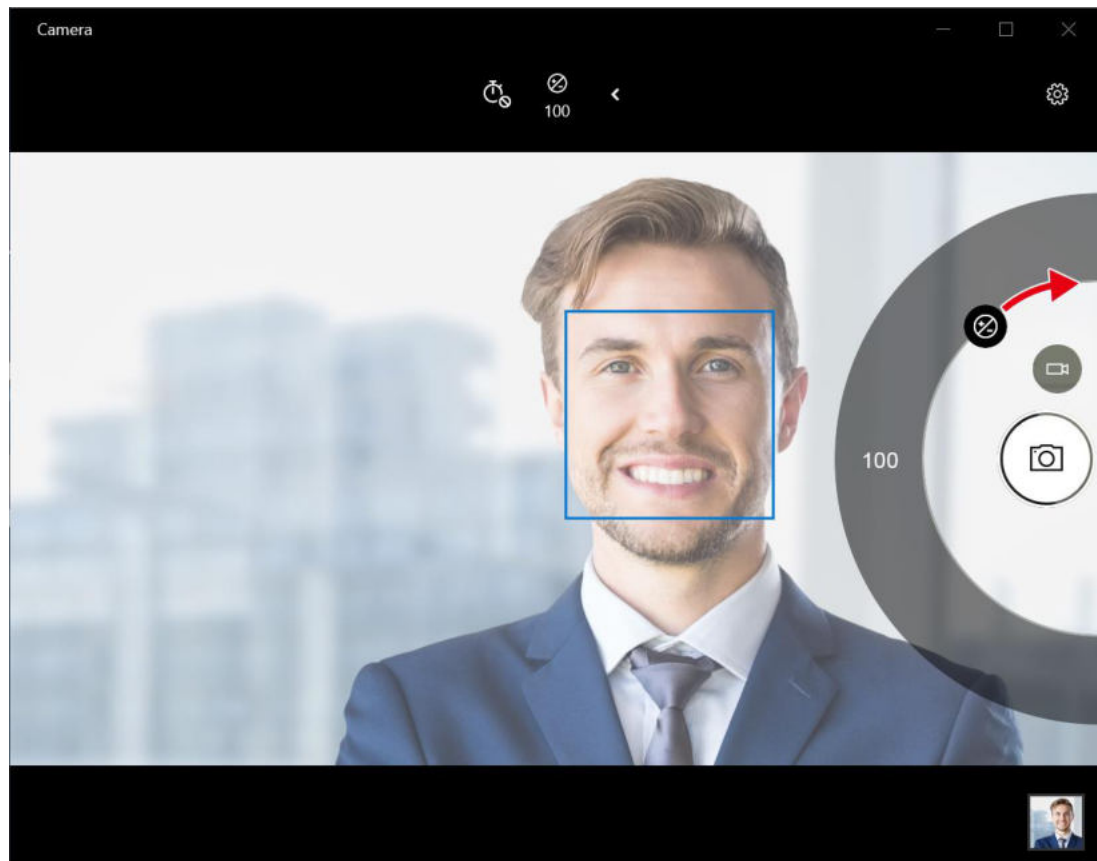
1. Tap  to switch to Video mode.




2. Tap  to start recording a video. The recording time appears on the bottom of the screen.
3. To stop recording the video, tap .


## Adjusting Brightness





1. Tap ➤ to switch to Pro mode.
2. Tap  to display the brightness control slider.
3. Do the following:
  - Tap and drag  upwards to brighten your photo or video.




- Tap and drag  downwards to darken your photo or video.

## Setting Photo Timer

Tap  to toggle the desired time delay.

- : Self-timer is off
- : 2-second self-timer
- : 5-second self-timer
- : 10-second self-timer

## Configuring Camera Settings

1. Tap  to enter the Settings menu.



2. Select the desired menu option and setting.

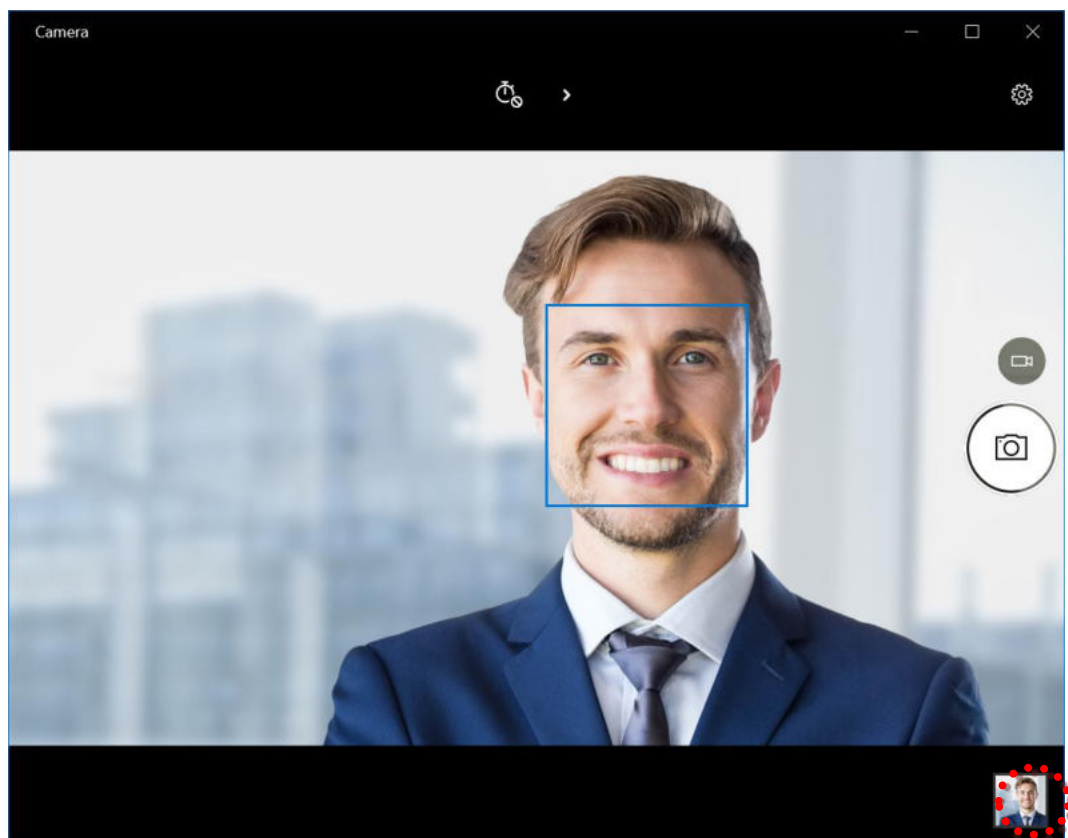
Menu Option	Description
When I press and hold the camera button	Set the action when you tap and hold the Camera button. <ul style="list-style-type: none"> <li>• Take one photo – Tap and hold the Camera button to take one photo.</li> <li>• Start a photo burst – Tap and hold the Camera button to</li> </ul>

## Operating Your Notebook

	take photos continuously. <ul style="list-style-type: none"><li>Start capturing video – Tap and hold the Camera button to create a video.</li></ul>
Aspect ratio	Select the aspect ratio of the photos.
Framing grid	Show or hide the framing grid lines.
Time lapse	When the setting is set to On, the system will keep taking photos until the Camera button is pressed.
Video recording	Set the video resolution.
Flicker reduction	Select 50 Hz or 60 Hz to reduce the flickering that may occur when recording video under fluorescent light.
Digital video stabilization	Enable this option to prevent blurring in videos.
Related settings	Select the related settings that can only be configured in <b>Settings</b> app.

## Viewing Photos/Videos

After taking a photo or recording a video, tap the thumbnail (in the bottom-right corner) to view the most recent photo or video taken.



Swipe right to see other photos or videos in your collection.

# Making Connections

This chapter will guide you through installing peripheral devices to maximize the use of your notebook.

## Installing the Memory Card

Your notebook supports different types of memory cards to provide faster data transfer.

Supported types: Micro SDHC, Micro SDXC

1. Pull to open the I/O port cover.



2. Push the memory card into the memory card slot until it clicks into place.



3. Close the I/O port cover.

# Installing a SIM Card

You can use a SIM card for wireless internet access.



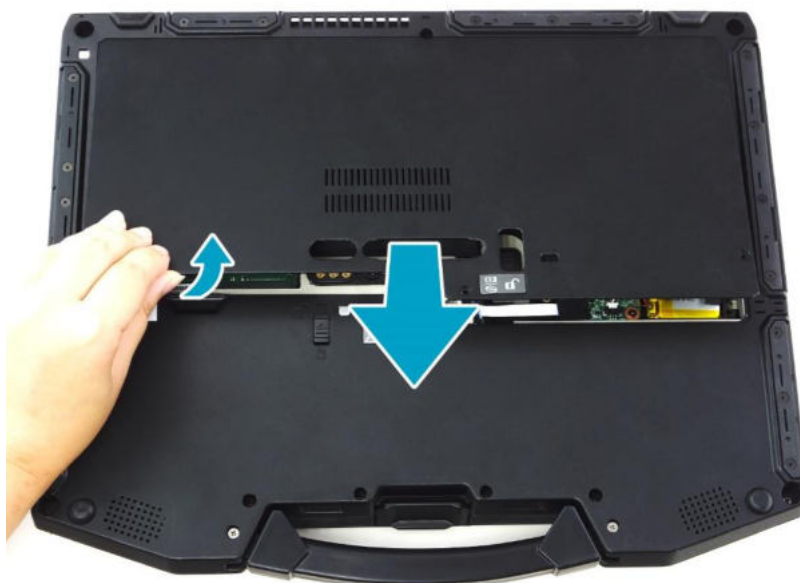
## **NOTE**

- Check the availability of service and data plan rates with your network service provider.
- Make sure to turn off the notebook before inserting the SIM card.

1. Remove the screws securing the CTO door, as indicated below.

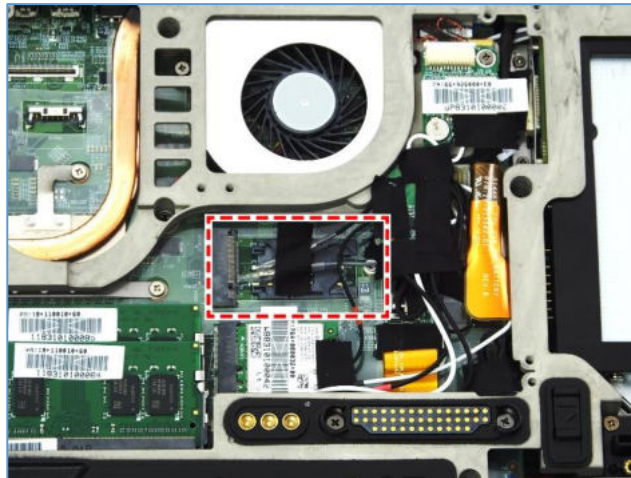


2. Remove the CTO door.





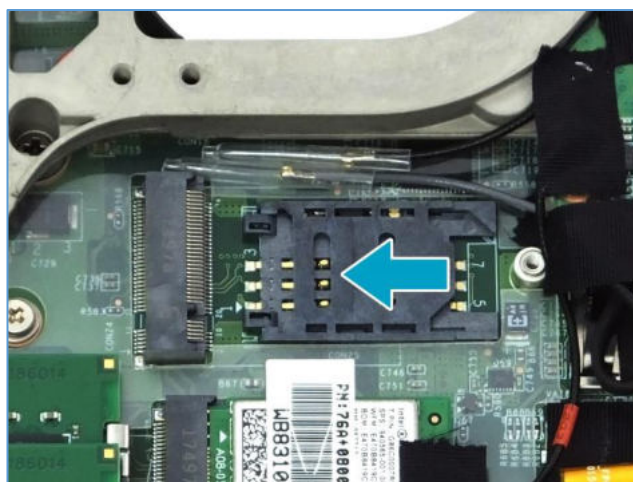
- ❖ Without LTE module: Proceed to [Step 3](#).



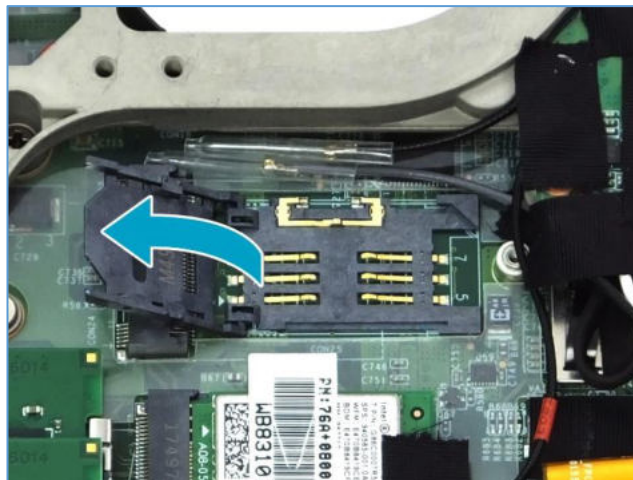
- ❖ With LTE module: Remove the screw securing the LTE module. Then carefully pull to disconnect the LTE module from the mainboard connector.



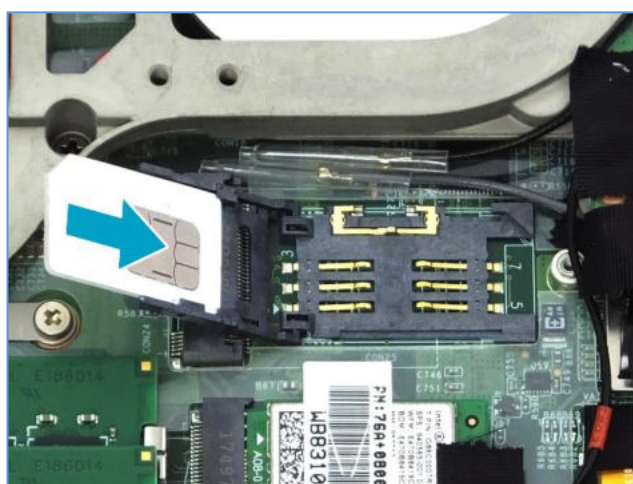
3. Push the SIM card slot forward to release it from the latch.



4. Lift the SIM card slot upwards.



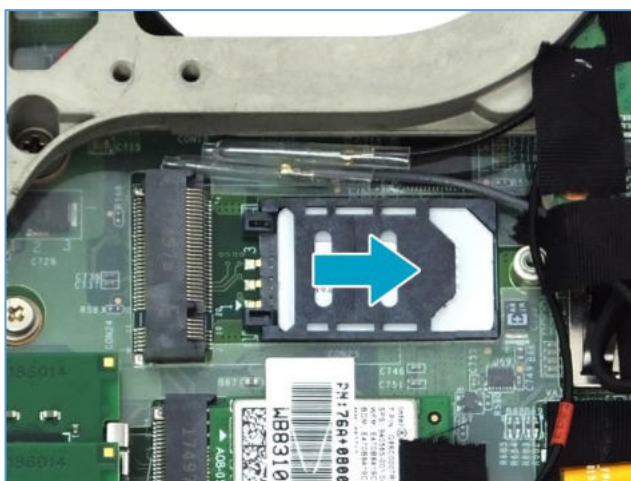
5. Slide a SIM card into the SIM card slot.



6. Gently press down the SIM card slot.



7. Push the SIM card slot as indicated with the arrow below until it locks into place.



8. Replace the CTO door and secure it using the screws.

## Installing a Smart Card

Your notebook is equipped with a built-in smart card reader that allows you to make secure purchases, store security information, and provide identification and information using a smart card.

1. Pull to open the battery compartment cover.



2. Insert a smart card into the smart card slot.



3. Close the battery compartment cover.

# Using the Optical Disk Drive

You can use the optical disk drive (ODD) to play or record DVDs or CDs.

## Placing a Disc

1. Pull to open the media bay cover.



2. Press the **Eject** button to eject the tray.



3. Place the disc on the tray. Then, close the disc tray.

## Manual Ejection

If the **Eject** button fails to work properly, insert a paper clip into the **Pin Hole Eject** to open the tray.



### NOTE

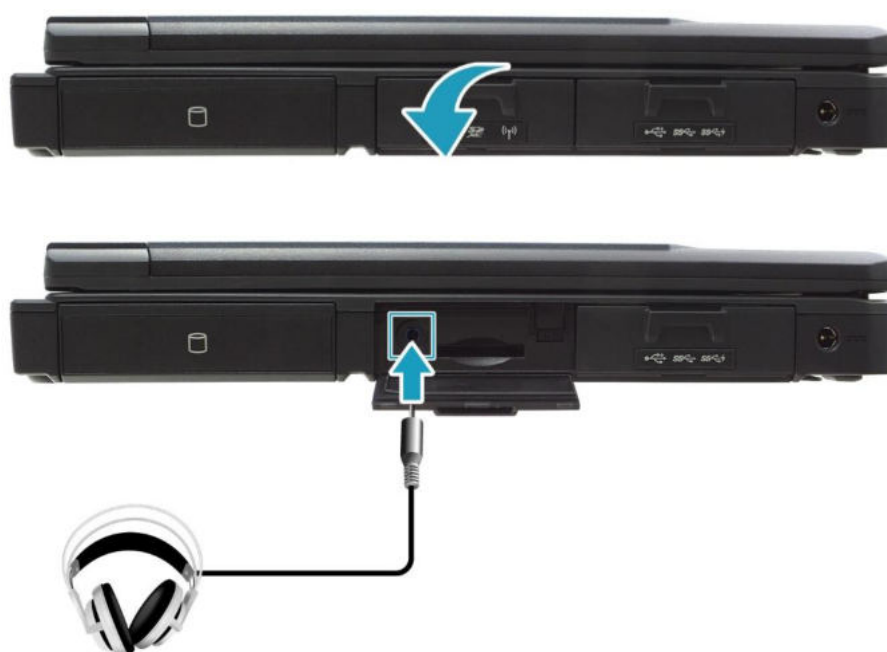


- Be sure that the notebook is turned off before performing the manual ejection.

## Connecting the Microphone/Headset

Your notebook is equipped with an audio combo jack that enables you to use the headset or microphone.

- ❖ To connect to a headset, open the I/O cover and plug the stereo headphone cable into the audio combo jack of your device.



- ❖ To connect to a microphone, open the I/O cover and plug the microphone cable into the audio combo jack on your device.



### **NOTE**

- The headset and microphone are not included in the package. They are sold separately.

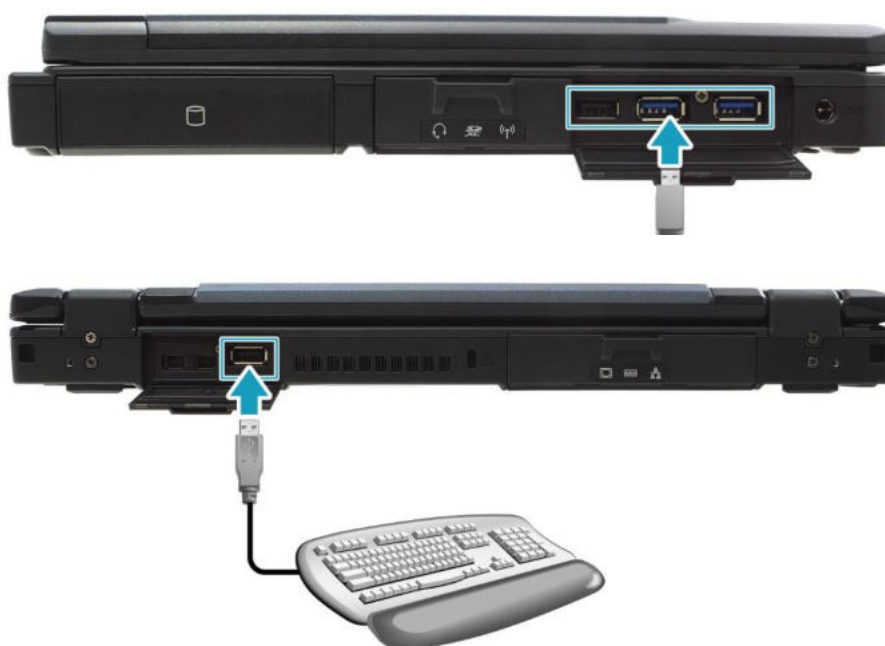
# Connecting USB Devices

You can connect your notebook to other USB devices, such as a mouse, keyboard, digital camera, printer, or an external hard disk drive.

1. Pull to open the I/O port cover.



2. Connect one end of the USB cable to the USB port of your device.



3. Connect the other end of the cable to the USB device (if necessary).



## **NOTE**

- A USB cable is not included in the package. It is sold separately or it may come with your USB device.

# Connecting to External Displays

You can connect an additional display to your notebook by using the mini DisplayPort or VGA cable.

1. Pull to open the I/O port cover.



2. Connect one end of the mini DisplayPort or VGA cable to the Mini DisplayPort or VGA port of your device.



3. Connect the other end of the cable to the external display.



## **NOTE**

- The mini DisplayPort or VGA cable is not included in the package. It is sold separately.

# Connecting to a Local Area Network (LAN)

You can connect your notebook to a local area network (LAN) using the Ethernet cable.

1. Pull to open the I/O port cover.



2. Connect one end of the Ethernet cable to the RJ-45 port of your notebook.



3. Connect the other end of the Ethernet cable to the router.



## **NOTE**

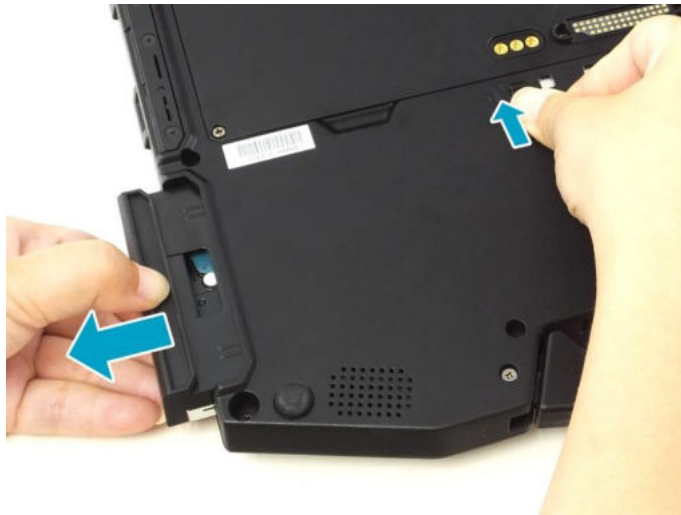
- The Ethernet cable is not included in the package. It is sold separately.



# Replacing the Hard Disk Drive (HDD)

To replace the HDD, follow the steps below:

1. Slide the HDD latch release button upwards and hold it in place. Then pull the HDD out to disengage it from its compartment.
2. Remove the HDD out of the HDD compartment.



3. Insert the new HDD into the HDD compartment. Then, push completely until the HDD locks into place.



# Connecting to Wireless Connections

You can connect your notebook to a Bluetooth, wireless local area network (WLAN), or WWAN.



## **NOTE**


- Do not disassemble the bumper. Otherwise, the antenna may be damaged, resulting in poor reception.
- Make sure to slide the RF Signal switch to enable the RF functions.

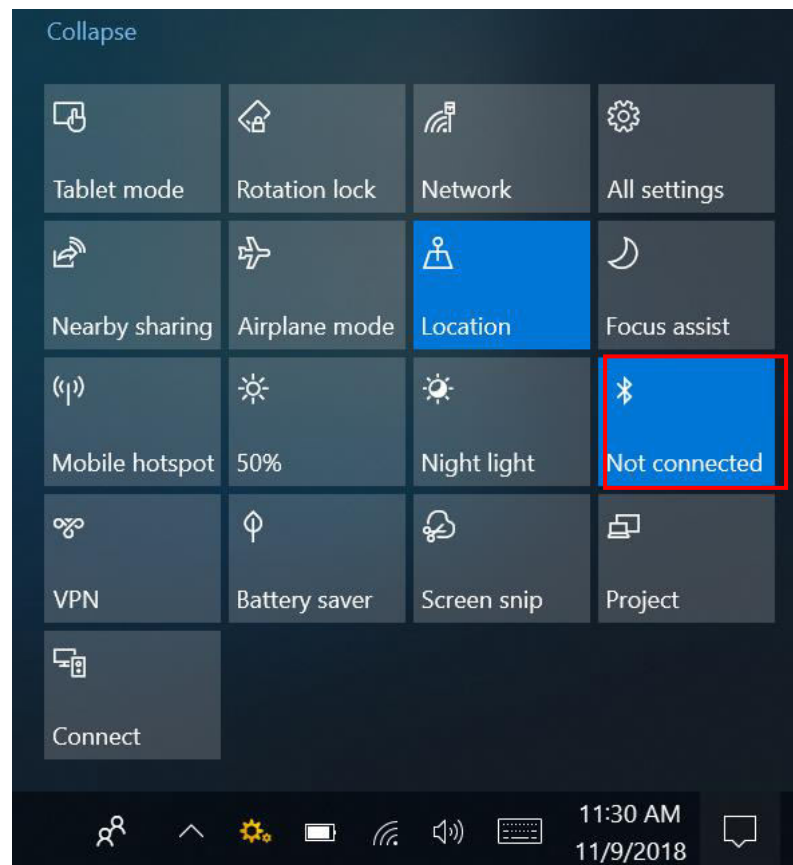


## Connecting to a Bluetooth Device

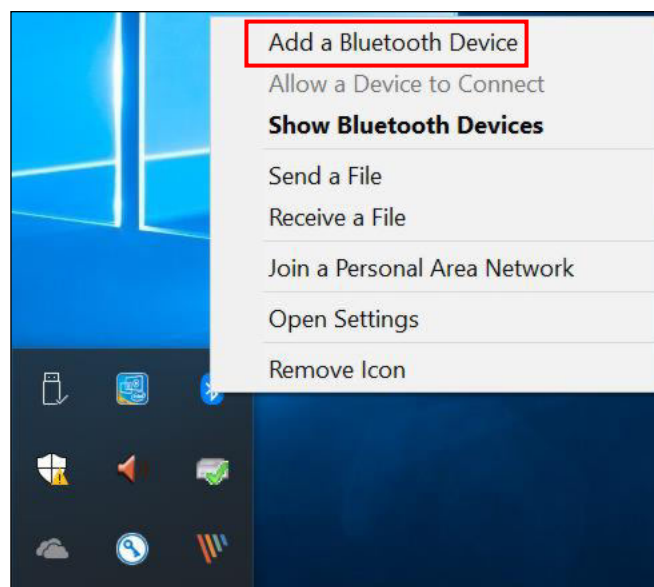
Your notebook can connect and communicate with other Bluetooth-enabled devices. By default, the Bluetooth function is disabled.

To add a device, follow the steps below:

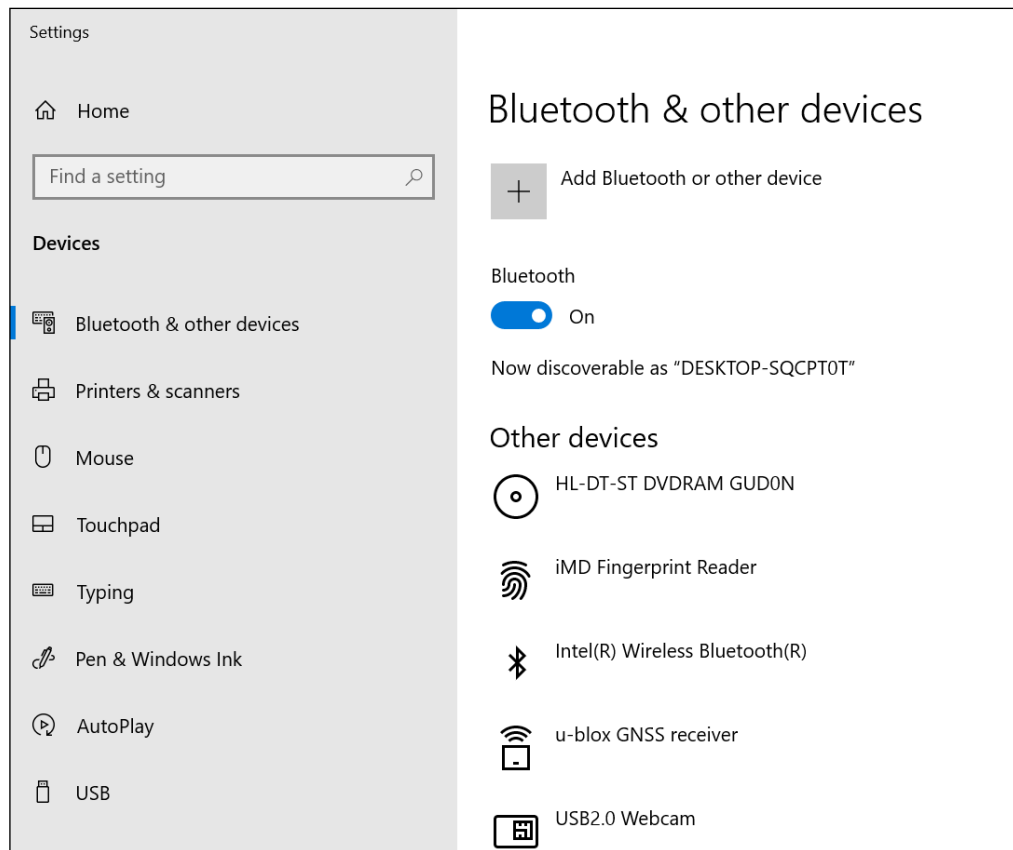
1. Tap  on the system tray. Then, tap **Bluetooth** to enable the function.



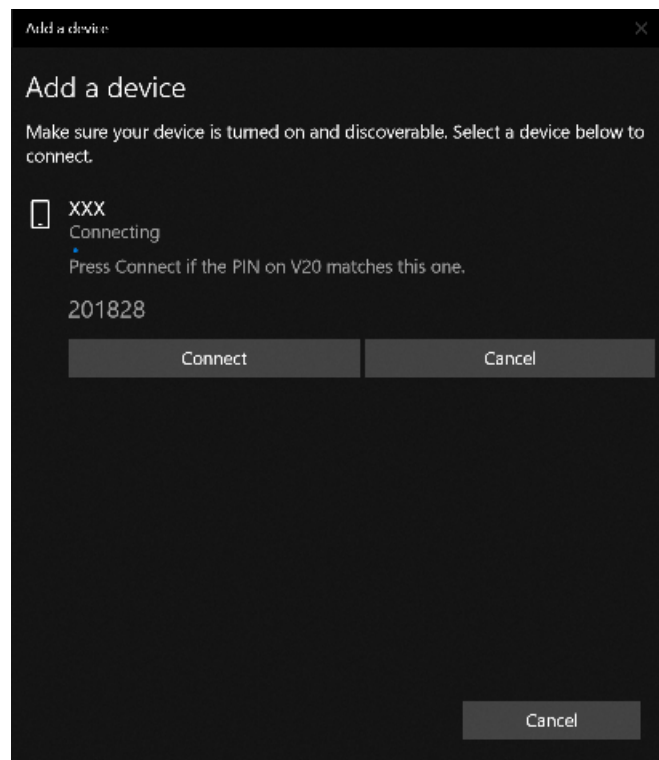
2. Tap the arrow icon (↕) on the system tray to display hidden icons.
3. Tap the Bluetooth icon (📶) and select **Add a Bluetooth Device**.



4. Tap + and select the kind of device you want to add.



5. Select the device you want to connect. Verify the pairing code on the screen of your device and pairing device match, then tap **Connect** to start pairing.

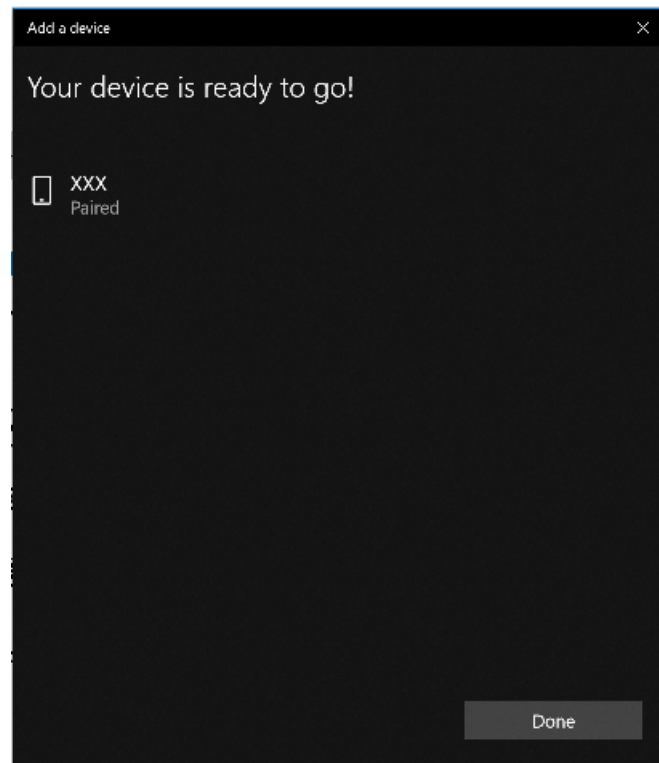




## NOTE

- If the device that you want to add does not appear on the screen, please check if the device is turned on and discoverable.

6. Tap **Done** to complete the pairing connection.



## NOTE

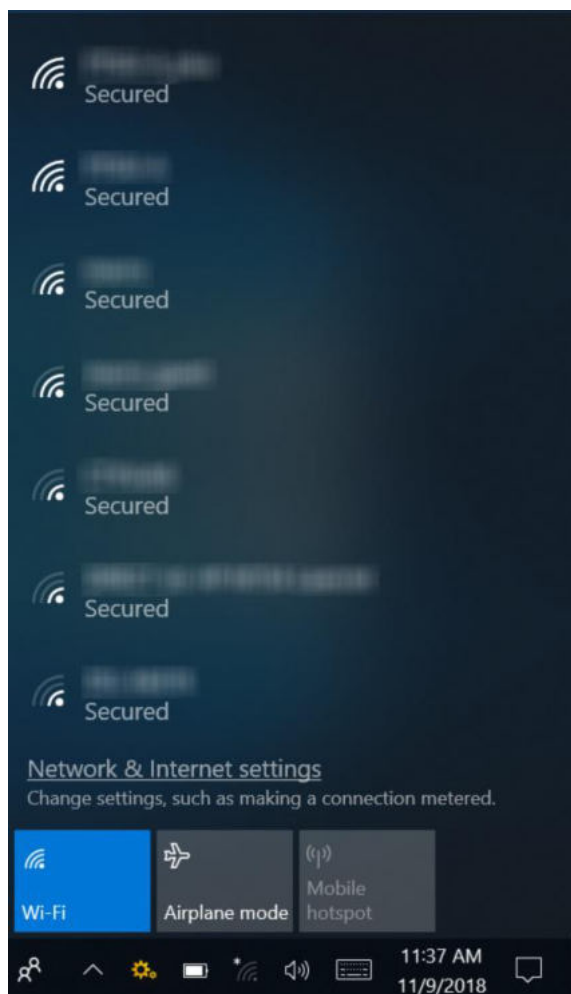
- Most Bluetooth-enabled devices need to be paired with your notebook. The PIN you enter on the notebook must be the same PIN to be entered on the other Bluetooth device.
- Once a partnership has been created, connecting to that device again will no longer require entering the PIN.
- To disconnect from the Bluetooth-enabled device, select the device in the Bluetooth menu and tap **Remove device**.

### Connecting to a Wireless Local Area Network


Your notebook comes with a WLAN module. A wireless network can be added either when the network is detected or by manually entering the settings information.

To connect, follow the steps below:

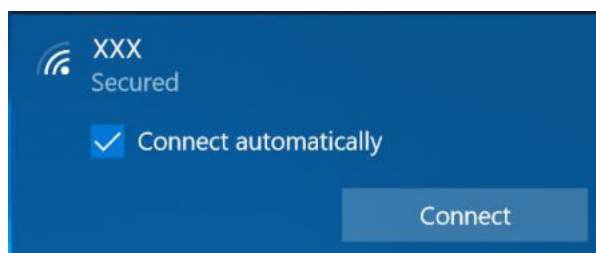
1. Tap the wireless network icon (  ) on the system tray.



#### TIP

If you do not see the wireless network icon, tap  on the system tray, and tap **Wi-Fi** to enable the Wi-Fi function.

2. Available wireless network connections are displayed. Tap the desired wireless network.



3. Tap **Connect**.

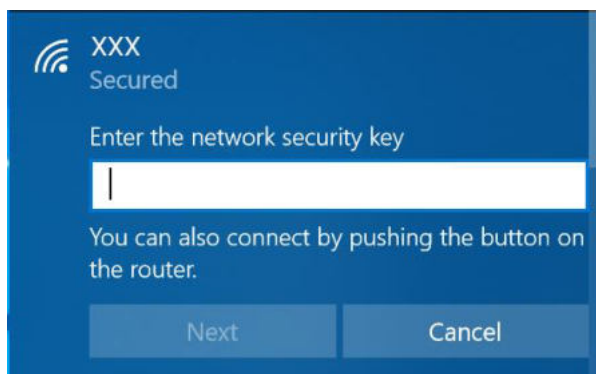
Some networks require a network security key or a password.



**TIP**

Check the **Connect automatically** box to automatically connect to this network when it is available.

4. Enter the network security key.



5. Tap **Next**. After the connection is established, you can see the wireless icon (📶) in the Notification area.



**NOTE**

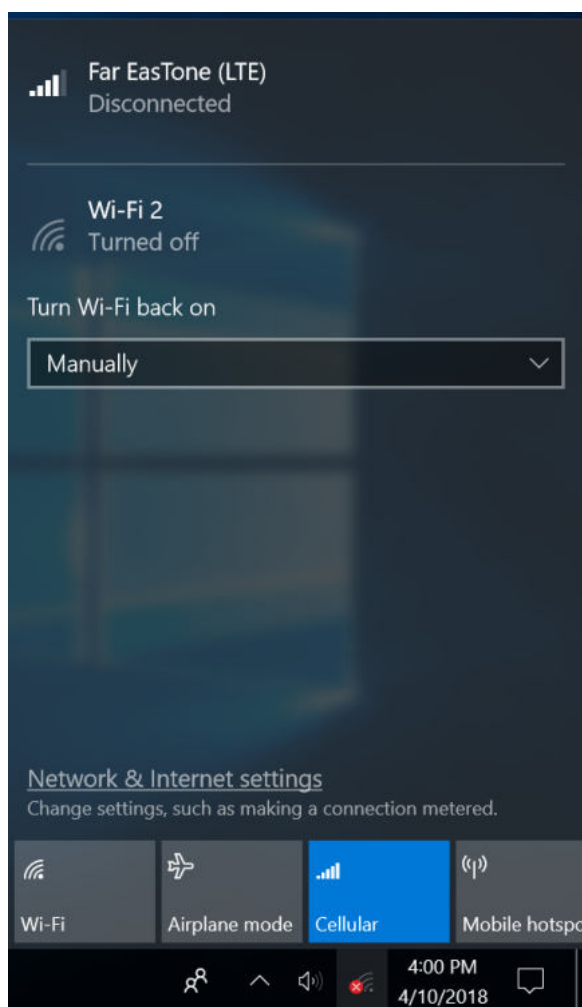
- Wi-Fi access requires service from a wireless service provider. Contact your service provider for more information.
- Actual wireless connectivity will depend on the system configuration. Please contact your dealer for more information.
- To disconnect from the wireless network, select the network in the wireless network list and tap **Disconnect**.

### Connecting to a Wireless Wide Area Network (WWAN)

The **WWAN** function allows your notebook to connect to the Internet using mobile or cellular data networks.

To connect, follow the steps below:

1. Insert a valid SIM card into the SIM card slot (refer to page 32).
2. Tap the cellular network icon (📶) on the system tray. Then, tap **Cellular** to enable the Internet connection via mobile data network.




#### NOTE

- The above screenshot is for illustration purposes only. The "Cellular" option will only appear on a device that is equipped with a LTE module.

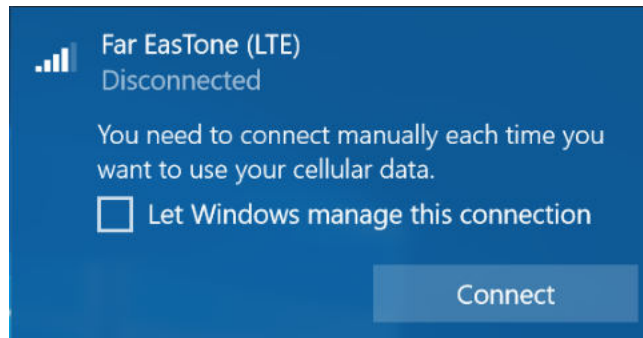


#### TIP

If you do not see the cellular network icon, tap  on the system tray, and tap **Cellular** to enable the function.



3. Select the mobile network carrier and tap **Connect** to establish the connection.



## TIP

Check the **Let Windows manage this connection** box to allow the system to automatically connect to this mobile data network.

# Using the BIOS Setup Utility

Your notebook has a BIOS setup utility which allows you to configure important system settings, including settings for various optional functions on the notebook. This chapter explains how to use the BIOS setup utility.

## BIOS Setup Menu

The BIOS Setup Utility allows you to configure your notebook's basic settings. When you turn on your notebook, the system reads this information to initialize the hardware so that it can operate correctly. Use the BIOS setup utility to change your notebook start-up configuration. For example, you can change the system's security and power management routines.

### Starting the BIOS Setup Utility

You can only enter the BIOS setup utility as the notebook is booting, i.e., between the time you turn on the notebook and before the Windows interface appears.

If your notebook is already on, shut down your notebook completely (power off), restart it, and then press the **Del** button on the keyboard to enter the setup utility.

## Navigating and Entering Information in BIOS

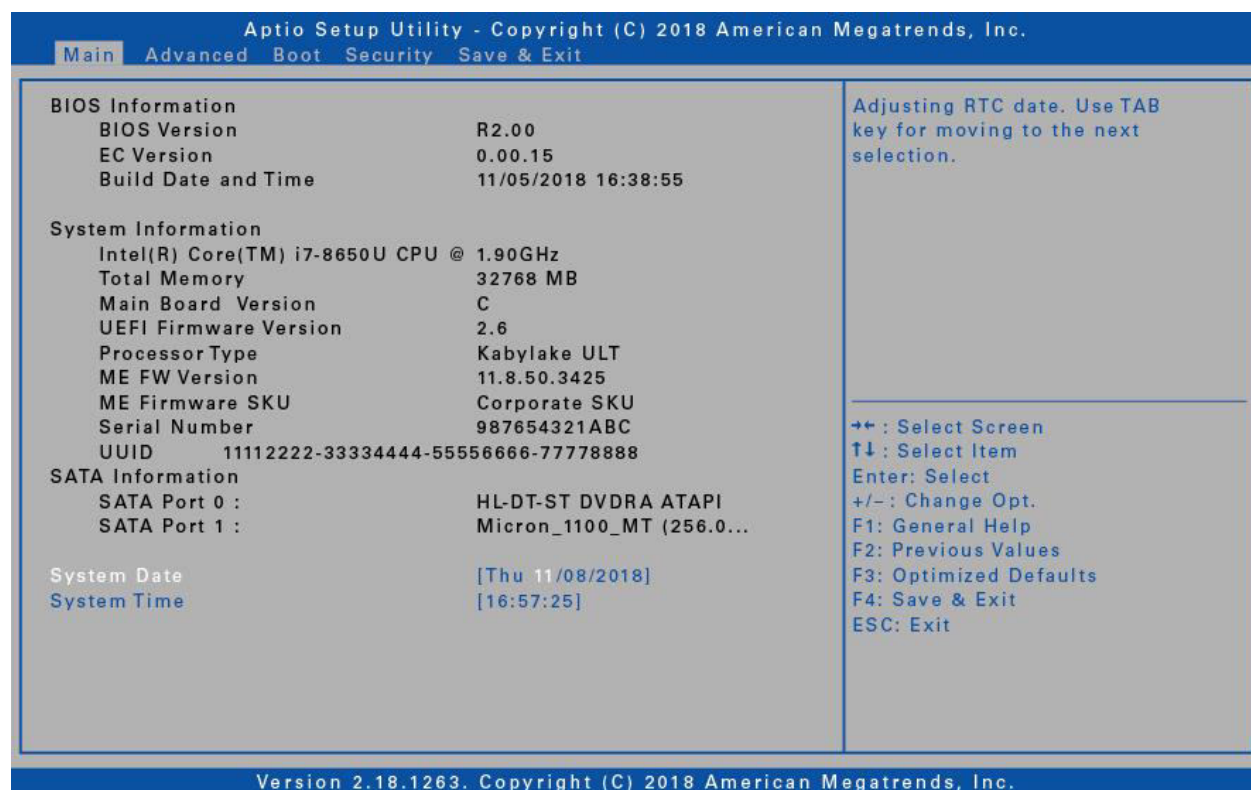
Use the following keys to move between fields and to enter information:

Keyboard	Description
→ ←	Select screen
↑ ↓	Select item
<b>Enter</b>	Select
+ / -	Change Opt.
<b>F1</b>	General Help
<b>F2</b>	Previous Values
<b>F3</b>	Optimized Defaults
<b>F4</b>	Save & Exit
<b>Esc</b>	Exit

Users are allowed to enter new values to replace the default settings in certain fields, and the rest of the fields are specified by system default parameters and cannot be modified by users. Reverse the attribute of the main options and press the **Enter** button to enter into the submenu. Press the **Esc** button to return to the previous configuration page. To display the Help screen at any time, simply press the **F1** button.

# Main Menu

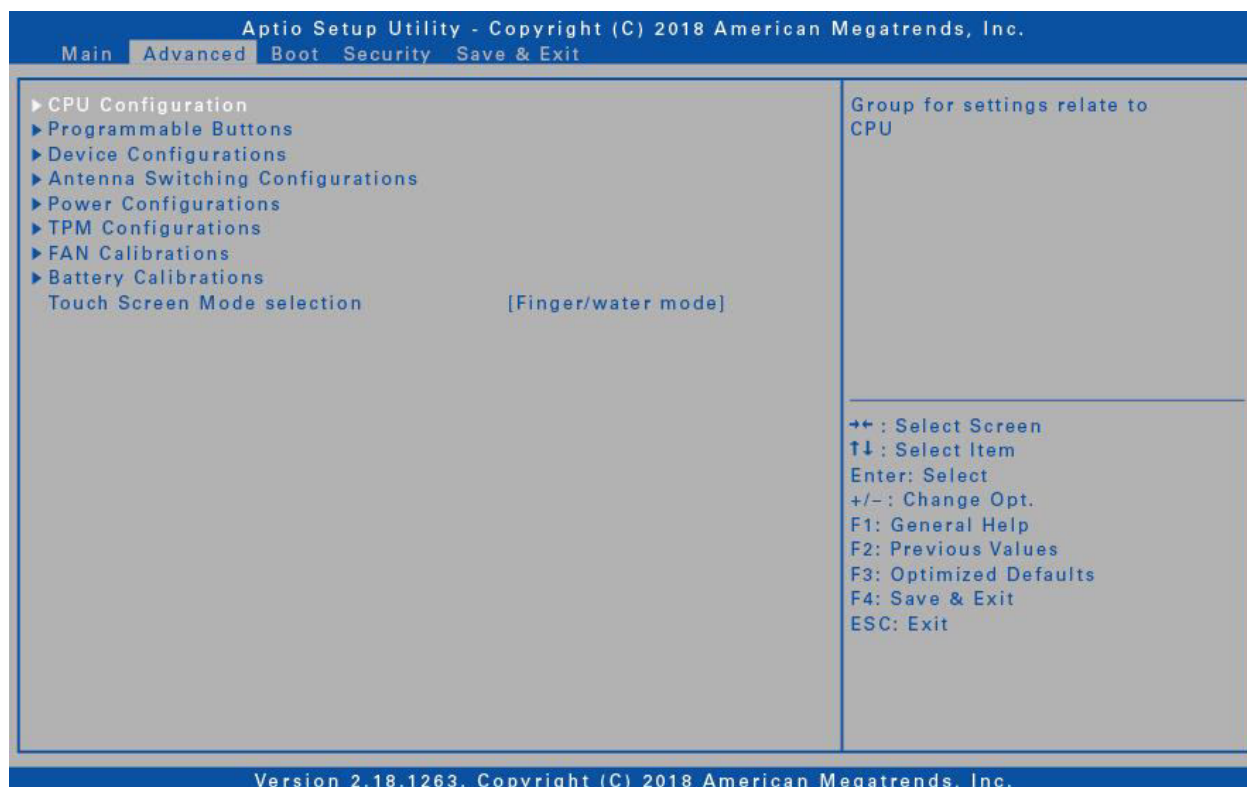
The Main menu displays the device's system overview information, including the system date and time.



Item	Description
BIOS Information	Displays the BIOS version detected during boot up.
System Information	Displays the CPU type and speed, total memory, mainboard version, UEFI Firmware version, processor type, ME FW version, ME Firmware SKU, serial number, and UUID.
SATA Information	Displays the SATA hard drive information.
System Date	Sets the system date.
System Time	Sets the system time.

# Advanced Menu

The Advanced menu allows you to configure specific system settings.



Item	Description
CPU Configurations	Configures the CPU parameters. For details, refer to CPU Configurations on page 54.
Programmable Buttons	Assigns the function for the <b>P1</b> button. <ul style="list-style-type: none"> <li>- Stealth mode button (by default).</li> <li>- Night Vision button.</li> <li>- Disabled (no function).</li> </ul>
Device Configurations	Configures the device settings, including USB 3.0 ports (1 & 2), USB 2.0 ports (3 & 4), LAN, SD card reader, TPM device, HD audio, finger printer scanner, touch screen, front camera, smart card, wireless LAN, Bluetooth, GPS, and Intel AMT. For details, refer to Device Configurations on page 55.
Antenna Switching Configurations	Configures the external WLAN, GPS, or WWAN antenna settings. For details, refer to Antenna Switching Configurations on page 56.
Power Configurations	Configures the power management settings including keyboard backlight timer, resume on AC power, wake on

## Using the BIOS Setup Utility

Item	Description
	LAN from S3/S4, wake on wireless LAN from S3/S4, and USB3.0 power share. For details, refer to Power Configurations on page 57.
TPM Configurations	Configures Trusted Computing settings.
FAN Calibrations	Performs the fan calibration.
Battery Calibrations	Performs the battery calibration.
Touch Screen Mode Selection	Selects the touchscreen mode. For details, refer to Touch Screen Mode Selection on page 57.

## CPU Configurations

Select this option to configure the CPU parameters.

Item	State	Description
Intel (VMX) Virtualization Technology	Enabled	Turns on the function. The default value is [Enabled].
	Disabled	Turns off the function.
VT-d	Enabled	Turns on the function. The default value is [Enabled].
	Disabled	Turns off the function.
Intel Trusted Execution Technology	Enabled	Turns on the function.
	Disabled	Turns off the function. The default value is [Disabled].

## Device Configurations

Select this option to configure the device settings.

Item	State	Description
USB Port 1	Enabled	Turns on the function.
	Disabled	Turns off the function.
USB Port 2	Enabled	Turns on the function.
	Disabled	Turns off the function.
USB Port 3	Enabled	Turns on the function.
	Disabled	Turns off the function.
USB Port 4	Enabled	Turns on the function.
	Disabled	Turns off the function.
LAN	Enabled	Turns on the function.
	Disabled	Turns off the function.
SD Card Reader	Enabled	Turns on the function.
	Disabled	Turns off the function.
TPM Device	Enabled	Turns on the function.
	Disabled	Turns off the function.
HD Audio	Enabled	Turns on the function.
	Disabled	Turns off the function.
FingerPrint Scanner	Enabled	Turns on the function.
	Disabled	Turns off the function.
Touch Screen	Enabled	Turns on the function.
	Disabled	Turns off the function.
Front Camera	Enabled	Turns on the function.
	Disabled	Turns off the function.
Smart Card	Enabled	Turns on the function.
	Disabled	Turns off the function.
Wireless LAN	Enabled	Turns on the function.

## Using the BIOS Setup Utility

Item	State	Description
	Disabled	Turns off the function.
	Enabled	Turns on the function.
Bluetooth	Enabled	Turns on the function.
	Disabled	Turns off the function.
GPS	Enabled	Turns on the function.
	Disabled	Turns off the function.
Intel AMT	Enabled	Turns on the function.
	Disabled	Turns off the function.



### NOTE

- By default, all settings are set to [Enabled].

## Antenna Switching Configurations

Select this option to configure the external WLAN, GPS, or WWAN antenna settings.

Item	State	Description
WLAN antenna	Enabled	Switches to the external WLAN antenna when it is affixed on a docking station.
	Disabled	Turns off the function.
GPS antenna	Enabled	Switches to the external GPS antenna when it is affixed on a docking station.
	Disabled	Turns off the function.
WWAN antenna	Enabled	Switches to the external WWAN antenna when it is affixed on a docking station.
	Disabled	Turns off the function.



### NOTE

- By default, all settings are set to [Disabled].



## Power Configurations

Select this option to configure the power management settings.

Item	State	Description
Keyboard Backlight Timer Settings	Keyboard Backlight Off, 1/3/5/10/15/30 /60/120 Minutes	Configures the length of time the keyboard backlight will remain on.
Resume on AC power	Enable	Turns on the function.
	Disable	Turns off the function.
Wake On LAN from S3/S4	Enable	Turns on the function.
	Disable	Turns off the function.
Wake On Wireless LAN from S3/S4	Enable	Turns on the function.
	Disable	Turns off the function.
USB 3.0 Power Share	Enable	Turns on the function.
	Disable	Turns off the function.



### NOTE

- By default, all settings are set to [Disable].

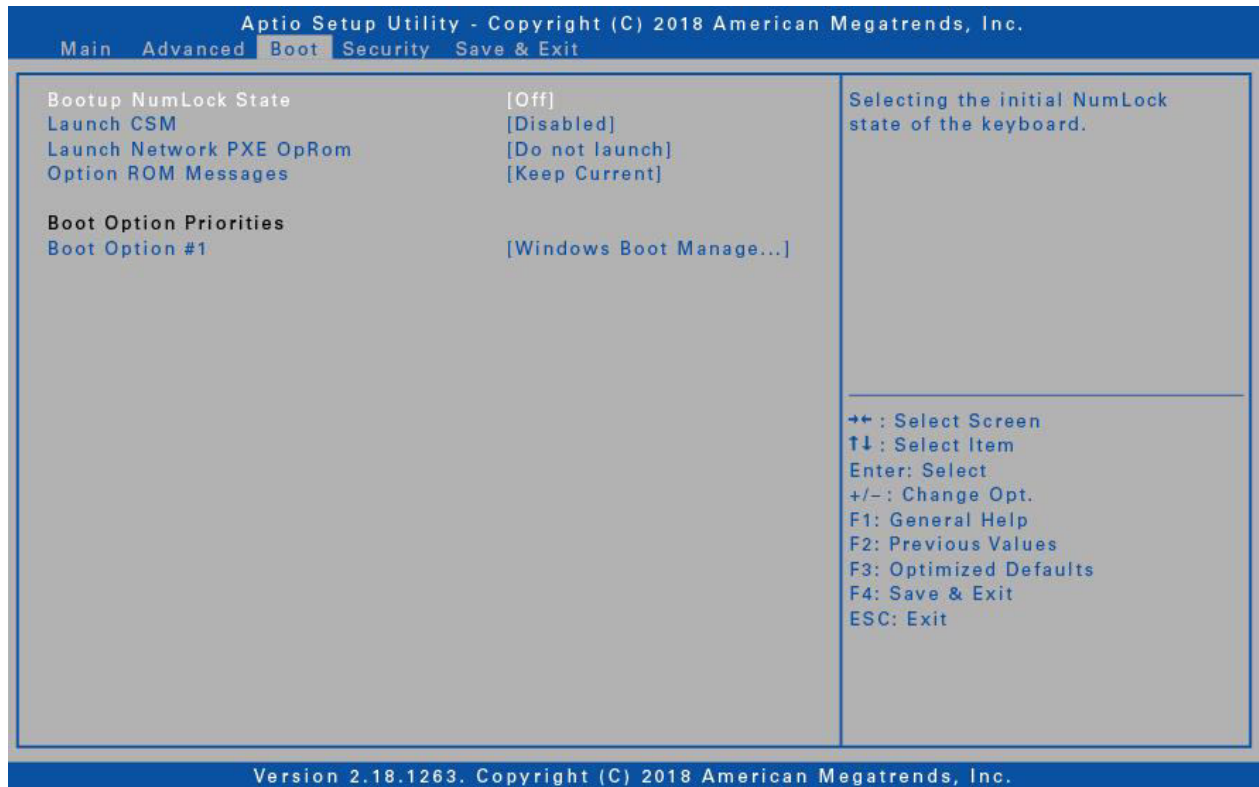
## Touch Screen Mode Selection

Select this option to configure the touchscreen mode.

Item	Description
Finger/Water mode	Select this for fingertip operation. When raindrops are falling on the screen should be rejected as input. This mode is set as the default operation mode.
Glove mode	Select this if you are wearing gloves.
Stylus mode	Select this if you are using the stylus.

# Boot Menu

The Boot menu allows you to configure the boot settings and boot sequence.



Item	Description
Boot up NumLock State	Selects the keyboard NumLock state.
Launch CSM	Enables/Disables CSM support.
Launch Network PXE OpRom	Selects the LAN PXE boot mode.
Option ROM Messages	Sets the display mode for Option ROM messages.
Boot Option Priorities	Sets the system boot order.

Item	Description
Administrator Password	Sets the administrator password.
Secure Boot	Customizes the Secure Boot settings.

# Save & Exit Menu

The Save & Exit menu allows you to save/discard the changes and restore the default values for all setup options before leaving the BIOS Setup Menu.



Item	Description
Save Changes and Reset	Resets the system after saving any changes.
Discard Changes and Reset	Resets the system setup without saving any changes.
Restore Defaults	Restores the default values for all the Setup options.
Boot Override	Displays all available boot options from the Boot Option List.

# Maintaining and Caring for Your Notebook

Taking care of your notebook will reduce the risk of damage to your device and ensure that it operates properly.

To help you maintain the quality and function of your notebook, this chapter provides guidelines on how to protect, store, clean, and travel with your device.

## Protecting Your Notebook

To safeguard the integrity of the data stored on your notebook as well as the device, please follow the precautions described below:

- Install an anti-virus program to monitor potential viruses that could damage your files.
- Use a Kensington cable lock to protect your notebook against theft. Cable locks are available for purchase from online retailers and in most stores that sell computers.
- To use the lock, loop the lock cable around a stationary object such as a table. Then, insert the lock into the Kensington lock hole and turn the key to secure the lock. Store the key in a safe place.

## Storing and Handling Your Notebook

### General Storage and Handling Guidelines

- Use your notebook at the recommended temperature—between 0°C (32°F) and 55°C (131°F)—to ensure optimal performance (Actual operating temperature depends on product specifications.)
- Avoid placing your notebook in a location subject to high humidity, extreme temperatures, mechanical vibrations, direct sunlight, or heavy dust. Using your device in extreme environments for long periods of time can result in product deterioration and a shortened product life.
- Do not place heavy objects on top of the notebook as this may damage the display.
- Do not operate in an environment with metallic dust.
- Store and use your notebook on a flat and steady surface. Do not stand the notebook on its side or store it in an upside-down position. The impact from dropping or an object hitting the device may cause damage.

- Do not cover or block any ventilation openings on the notebook. For example, do not place the notebook on a bed, sofa, rug, or other similar surface. Overheating may occur, which could result in damage to your notebook.
- Keep your notebook away from objects that are vulnerable to heat damage, as the device can become very hot during operation.
- Keep your notebook at least 13 cm (5 inches) away from electrical appliances that can generate a strong magnetic field such as a TV, refrigerator, motor, or a large audio speaker.
- Avoid moving your notebook abruptly from a cold to a warm place. A temperature difference of more than 10°C (18°F) may cause condensation inside the unit, which may damage storage media.

## Display and Touchscreen Guidelines

- Use your finger or the included stylus on the touchscreen surface. Using a sharp or metallic object, such as a pen or pencil, may scratch and damage the display, thereby causing errors.
- Use a soft cloth to remove dirt on the display. The touchscreen surface has a special protective coating that prevents dirt from sticking to it. Not using a soft cloth may cause damage to the special protective coating on the touchscreen surface.
- Turn off the notebook power when cleaning the display. Cleaning the display with the power on may cause improper operation.
- Do not use excessive force on the display. Avoid placing objects on top of the display as this may cause the glass to break, thereby damaging the device.
- Expect a slower response time when using the touchscreen at lower temperatures (less than 5°C or 41°F). A normal response time may be restored upon returning to room temperature.
- Refer to Windows online support for instructions on recalibrating the touchscreen display when there is a noticeable problem with the touchscreen function (e.g., improper display resolution or unresponsive touchscreen).
- LCD image sticking occurs when a fixed pattern is displayed on the screen for a prolonged period of time. You can avoid the problem by limiting the amount of static content on the display. It is recommended that you either use a screen saver or turn off the display when it is not in use.
- To maximize the life of the backlight display, allow the backlight to automatically turn off as a result of power management.

## Battery Pack Guidelines

- Do not expose the battery to temperatures below 0°C (32°F) or above 46°C (115°F). This may adversely affect the battery pack.
- While the battery may not provide 100% capacity at temperature extremes, its capacity is restored when the battery temperature returns to a normal range, around 20°C (68°F).
- Your battery will last longer during the day if it is used, charged, and stored between 50°F and 86°F (10°C and 30°C).
- Charge the battery nightly where the temperature will remain around 68°F (20°C). Your battery may not last as long throughout the day if you charge it at higher or lower temperatures.
- Allow unrestricted airflow while the device is connected to external power. Make sure that the fan inlet and outlet are unobstructed.
- Avoid exposure to extreme temperatures for long periods as this can shorten battery charge life or damage the battery.
- If your battery is charged in a cold (less than 5°C/41°F) or very warm (greater than 50°C/122°F) environment, it is possible that the battery LED will indicate that the charge has stopped; however, this does not necessarily mean that your battery is fully charged.
- Read and follow all battery precautions in the Safety section.
- Use only batteries of the same kind as replacements.
- Turn the power off before removing or replacing batteries.
- Do not tamper with the batteries.
- Keep batteries away from children.
- Before storing your battery, read and follow the recommendations in the Battery Tips section.
- Dispose of used batteries according to local regulations.
- Recycle if at all possible.

## Cleaning Your Notebook

### Cleaning the Outside Case

- Disconnect external power and turn off the device.
- Remove the battery.
- Add a small amount of water to a soft cloth and clean the device case. Do not use paper products because they can scratch the surface.
- Wipe off any excess liquid with a soft cloth.
- Reinstall the battery.

### **CAUTION!**

***Aerosols, solvents, or strong detergents are not recommended cleaning solutions and may void your warranty. For system decontamination***

***recommendations please contact your support representative.***

### **Cleaning the Display**

Use a soft, dry cloth. In some cases, you can use a small amount of water to remove streaks or smears. For difficult display cleaning tasks, use a 50/50 mixture of isopropyl alcohol and water. Do not use paper products because they can scratch the screen.

### **Cleaning the External Power Connector**

The external power connector may sometimes be exposed to moisture and/or contamination causing an unreliable connection to the external power source. Clean the connector with a cotton swab dipped in electronics grade isopropyl alcohol.

### **Cleaning the RJ-45 / USB Connectors**

If the connector pins get dirty, clean the connector with a cotton swab dipped in electronics grade isopropyl alcohol.

## **Traveling With Your Notebook**

Before traveling with your notebook, make sure you prepare and follow the precautions described below:

- Back up the data on your hard drive to a flash drive or other storage device. As an added precaution, bring an extra copy of your important data.
- Make sure that the battery pack is fully charged.
- Ensure that your notebook is turned off.
- Confirm that all the connector covers are closed completely to ensure the device's waterproof integrity.
- Disconnect the AC adapter from your notebook and take it with you. Use the AC adapter to power the device and charge the battery.
- Hand-carry your notebook onto an airplane, train, or bus. Do not check it in as luggage.
- If you need to leave your notebook in a car, store it in the trunk to avoid exposing it to excessive heat.
- When going through airport security, do not carry your notebook through the magnetic detector (the device you walk through) or expose it to a magnetic wand (the handheld device used by security personnel). It is recommended that you send the notebook and any flash drives through the X-ray machine (the device where you set your bags).
- If you plan to travel abroad with your notebook, consult your dealer for the appropriate AC power cord for use in your country of destination.



# Troubleshooting

This chapter advises you on what actions to take when solving common computer problems that may be caused by issues with hardware or software.

## Preliminary Checklist


Here are the initial steps you should follow before taking further action when encountering any problem:

1. Try to identify and isolate which part of the notebook is causing the problem.
2. Make sure that you turn on all peripheral devices before turning on the notebook.
3. If you are having trouble with an external device, make sure that the cable connections are correct and secure.
4. Make sure that the configuration information is properly set in the BIOS Setup program.
5. Ensure that all the device drivers are correctly installed.
6. Make note of your observations. Are there any messages on the screen? Do any indicators light up? Do you hear any beeps? Detailed descriptions are useful to the service personnel when you need to consult someone for assistance.
7. If any problem persists after you follow the instructions in this chapter, contact an authorized dealer for help.

## Solving Common Problems

### Battery Problems

#### The battery does not charge

- To prevent possible damage to the battery, the device does not allow the battery to charge if the internal temperature of the battery gets too low ( $< 5^{\circ}\text{C}$  or  $< 41^{\circ}\text{F}$ ) or too high ( $> 50^{\circ}\text{C}$  or  $> 122^{\circ}\text{F}$ ). If possible, charge the battery in a location with a moderate temperature of around  $20^{\circ}\text{C}$  ( $68^{\circ}\text{F}$ ).
- If possible, turn off the device while the battery is charging.
- If the battery is new or has been stored for a week or more, follow this procedure:
  1. Make sure the device is turned off.
  2. Remove the battery.
  3. Connect the AC adapter to the device and an AC wall outlet, and then turn on the device by pressing the  button.
  4. Let the device complete the boot process. Then reinstall the battery.

## Troubleshooting

---

- Allow the system to remain idle for one hour with the AC adapter connected to the device.
- The Battery Power LED lights up when the battery starts charging.
- If the battery still fails to start charging after an hour, remove the battery, wait several seconds, and then install it again.
- If the battery does not begin charging within several minutes, return the unit for service.

### **The battery takes longer than seven hours to charge.**

- Under moderate temperatures, about 20°C (68°F), the device's battery takes approximately 4 to 5 hours to completely charge.
- As the battery temperature approaches the end of its temperature range (5°C/41°F to 50°C/122°F), it may take longer to charge the battery.

### **The battery doesn't hold charge for very long.**

- Calibrate the battery. If your battery is new or has not been used for several weeks, calibrating the battery accurately sets the gas gauge.
- As your battery ages, its maximum capacity naturally decreases and even the best maintained batteries eventually need to be retired. Consider replacing the battery if you are not getting the usage you need from it.
- To meet ENERGY STAR® requirements, Wake on LAN is enabled by default. If running on battery power, this may decrease battery run-time. To change Wake on LAN settings, open the Device Manager, Network Adapters and select the LAN device. Open the device Properties and select Power Management. Disable the Wake on LAN setting by unchecking. Allow this device to wake the computer.

### **The gas gauge isn't full after charging the battery.**

- This may indicate that the charging process terminated prematurely.

### **The gas gauge reads "full," but the charging LED is still lit.**

- If you charge your battery daily, rely on the gas gauge reading to determine battery capacity. The charging process may continue even if the gas gauge reads full. External power can be removed because the battery is virtually full.

### **My battery seems to have less and less capacity.**

- If your battery is new, or if you are using it for the first time, you will need to calibrate it (see Battery Calibration) prior to using it.
- As your battery ages, the maximum capacity that it can hold naturally decreases and even the best maintained batteries eventually need to be retired. Consider replacing the battery if you are not getting the usage you need from it.

---

## Bluetooth Wireless Transmission Problems

**I cannot connect to another device with Bluetooth wireless technology.**

- Ensure that you have activated the Bluetooth feature on both devices.
- Make sure that the distance between the two devices is within the acceptable limit and that there are no walls or other obstructions between the devices.
- Confirm that the other device is not in “Hidden” mode.
- Verify that both devices are compatible.

## Display Problems

**The display performance is slow.**

- The temperature may be too cold. Move the device to a warmer operating environment.

**The underlined, inverse, and hypertext characters are difficult to read on the screen.**

- Right click on the Windows Desktop, select Personalize, then Colors to change the color and style of your Windows.

**I changed my display resolution, but I see no difference on the screen.**

- Select **Start > Power > Restart**.

**Nothing happens when I try to use the stylus on my touch screen.**

- If you cannot select objects accurately with the stylus, you may need to calibrate the touch screen.

**The touch screen doesn't respond after a suspend.**


- The touch screen needs a few seconds to work after a suspend. Wait a moment and try again.

# Hard Disk Problems

## The hard disk will not spin up so the device can't boot up.

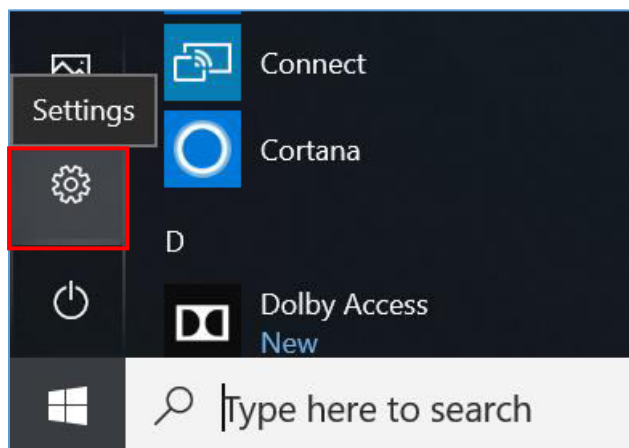
- This occurs if the unit is exposed to extremely low temperatures. This is not a hardware failure associated with the hard disk. The integrated hard disk drive heater will warm the drive to a safe operating temperature.

## The device does not startup properly.

- Make sure you remove any USB drives from the unit before you start it.
- Connect the AC adapter to charge the battery if it is not charged.
- If the battery does not begin charging, perform the following:
  1. Remove the battery.
  2. Connect the AC adapter.
  3. Turn on the device by pressing the  button.
  4. Reinstall the battery. The battery LED is a steady orange while the battery is charging.

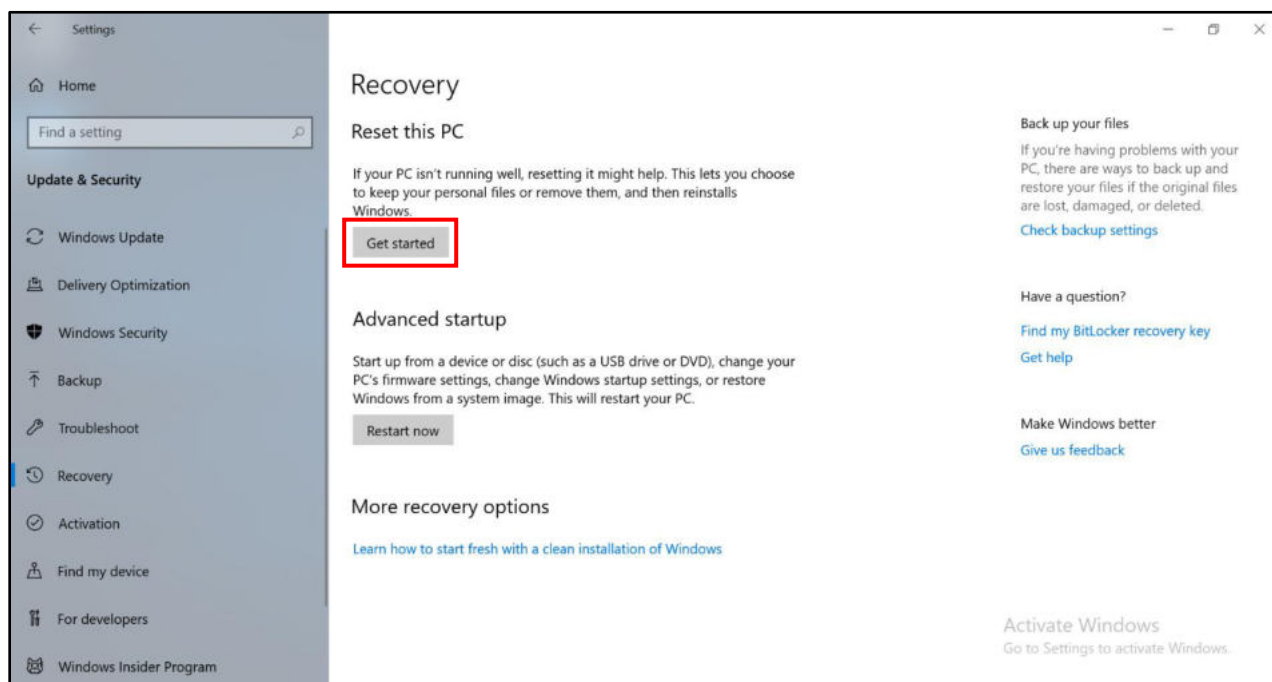
## Hard disk recovery process on Win10

1. Select **Start**  > **Settings** .



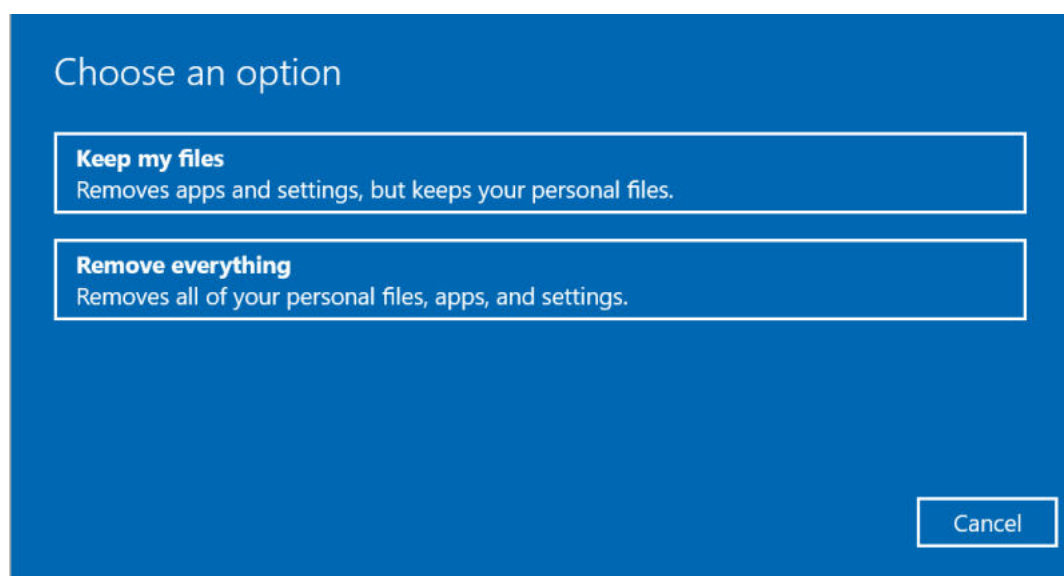
2. Select **Recovery** under **Update & Security**.

3. Under **Reset this PC**, tap **Get started**.

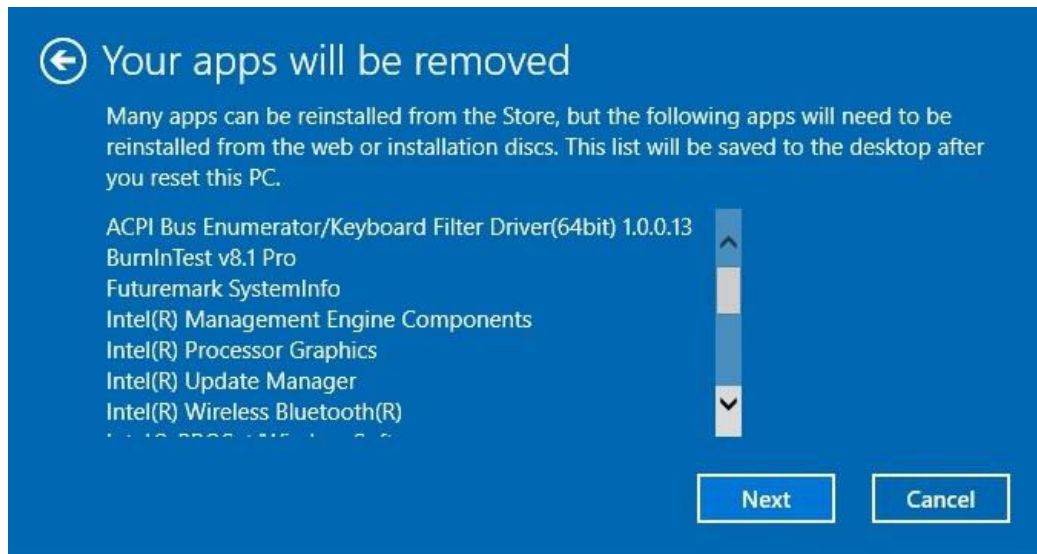


4. Select one of the two options depending on your needs.

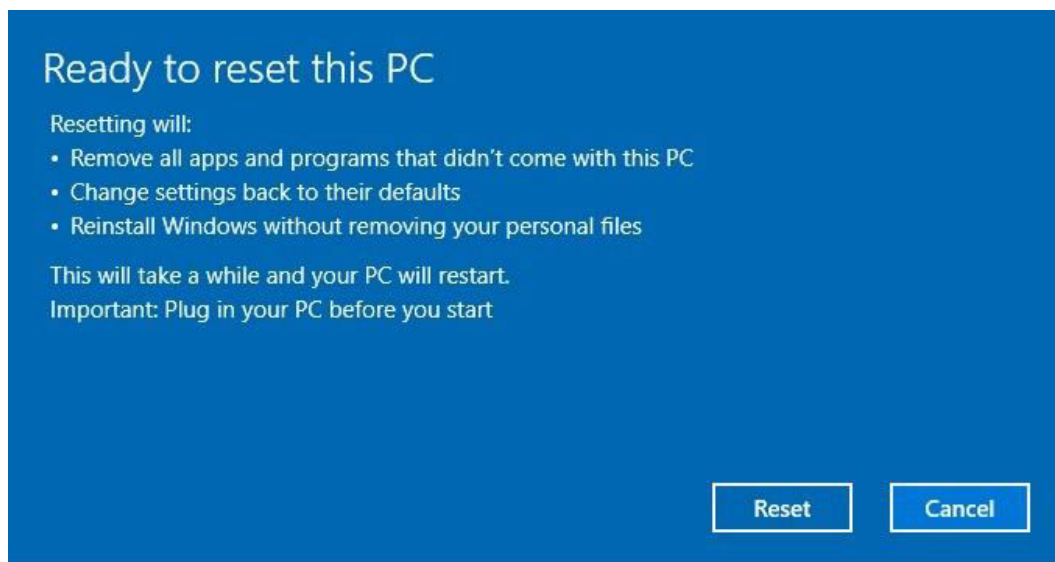
- **Keep my files** (requires around 3 to 4hr)
- **Remove everything** (requires around 5 to 6hr)



5. You are informed of the programs that will be removed. Tap **Next** to proceed.



6. Tap **Reset** to start resetting.



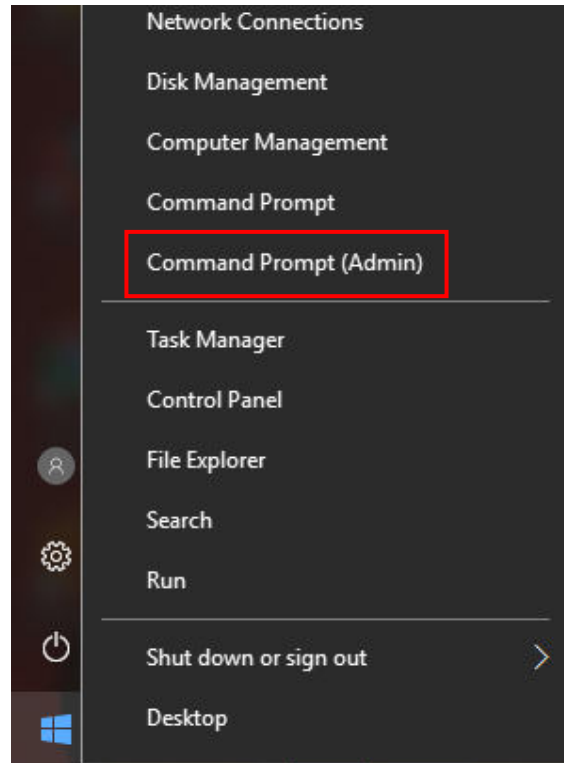
### NOTE

- If you see a message as shown below that means **WinRE** (Windows Reset) is disabled.



7. To enable resetting Windows, follow the steps below:

- a. Hover mouse over **Start**  menu.
- b. Right click and select **Command Prompt (Admin)** from the pop-up menu.





- c. Enter the following command: `Reagentc /enable`
- d. Press **Enter**. Wait until you see the "Operation Successful" status on the screen.
- e. Follow steps 1 to 7 to reset your device.




# Other Problems

## The device won't turn on.

- Make sure a fully charged battery is properly installed.
- Connect external power to charge the battery if it is not charged.
- If you are using the AC adapter, check the electrical outlet you are using to make sure it is working properly.
- If the device does not turn on, reset the device by holding down the  button for at least ten seconds, release it, and then press the  button again.

## The device won't turn off.

1. Select **Start > Power > Restart**.
2. If that does not work, press **Ctrl + Alt + Del** and then select **Task Manager**.
3. If any programs are open, use your arrow keys to highlight each one and select End task. Repeat this until all programs are closed.
4. If that still does not work, press and hold the  button for approximately ten seconds and then release it.

## The device doesn't make any sounds, even during boot-up.

- You may have enabled Stealth Mode. Disable Stealth mode.

# Appendix

## Copyright

Copyright© 2018. All rights reserved.

No part of this user manual may be transmitted, stored in a retrieval system, or translated into any language or computer language, in any form or by any means, without the prior written permission of the manufacturer. Information is subject to change without prior notice.

## Specifications

CPU	Intel® 8th Generation KabyLake Refresh Platform 15W U-Processor series, BGA type <ul style="list-style-type: none"><li>– Intel Kaby Lake R, U-Processor (15W)</li><li>– Intel Core i5-8250U-1.6GHz Processor-6MB SmartCache, W/O vPRO</li><li>– Intel Core i5-8350U-1.7GHz Processor-6MB SmartCache, W/ vPRO</li><li>– Intel Core i7-8550U-1.8GHz Processor-8MB SmartCache, W/O vPRO (2nd priority)</li><li>– Intel Core i7-8650U-1.9GHz Processor-8MB SmartCache, W/ vPRO</li></ul>
BIOS	UEFI Security Boot Function & Power Management Menu
Memory	<ul style="list-style-type: none"><li>– Two DDR4 SO-DIMM sockets</li><li>– DDR4-2400MHz</li><li>– 32GB (16GB*2)</li></ul>
Storage	<ul style="list-style-type: none"><li>– 2.5" 7mm SATA3 HDD/SSD, Support Quick-release feature</li><li>– Optional OPAL 2.0 SSD</li><li>– Optional FIPS 140-2 HDD</li></ul>
Display	<ul style="list-style-type: none"><li>– (1) 14.0" FHD LCD, resolution 1920*1080</li><li>– (2) 14.0" HD LCD, resolution 1366*768 -&gt; 2nd priority</li><li>– (3) 14.0" FHD LCD, resolution 1920*1080, High-brightness (1000nits) with Capacitive multi-touch panel</li><li>– 10-finger Projective Capacitive Touch, support 3 different operating modes, Finger/Water mode/Glove mode/Stylus mode</li><li>– Passive Capacitive Stylus</li></ul>

## Appendix

Audio	<ul style="list-style-type: none"> <li>– High Definition Audio</li> <li>– Two speakers, Sound pressure 85dB at 0.5M</li> <li>– Average at 0.8, 1K, 1.2K, and 1.5KHz with maximum volume Mic. Array</li> </ul>
Camera	<ul style="list-style-type: none"> <li>– Integrated 2.0Mega-pixel Web-cam with a Shutter and Mic*2</li> <li>– Support visual in-use White indicator</li> </ul>
I/O Ports	<ul style="list-style-type: none"> <li>– Two USB 3.1 Gen1 connectors (One of USB3.0 has USB Power Share function)</li> <li>– Two USB2.0 connectors</li> <li>– One Audio combo jack (3.5mm)</li> <li>– One RJ-45 jacks for internal 10/100/1000Mbit Ethernet</li> <li>– One VGA port</li> <li>– One HDMI port (or optional Two Mini-DP ports)</li> <li>– One D-sub 9-pin RS232 serial port (Optional to support RS422/RS485 by customized BIOS)</li> <li>– One DC-In jack</li> <li>– One 41-pin Pogo Docking connector</li> <li>– Optional 3 RF pass-thru connectors for Ext. antenna of WWAN, GPS and WLAN</li> </ul>
Communication	<ul style="list-style-type: none"> <li>– Integrated Gigabit Ethernet with RJ45 connector</li> <li>– Intel Dual Band Wireless AC 9260 (M2 socket type 2230)</li> <li>– Supports 802.11a/b/g/n/AC, Bluetooth® v5.0</li> <li>– Built-in dual antennas in display module</li> <li>– M2 module (Type 3042) for optional WWAN <b>EM7565</b> Module</li> <li>– The SIM card is secured behind a security-screwed door</li> <li>– Built-in WWAN dual antennas in display module (WWAN is a CTO option)</li> <li>– Dedicated GPS module, UBLOX-NEO-M8N chip, support GPS/GLONASS/BeiDou (GPS is a CTO option, GPS Antenna supports GPS &amp; GLONASS as default, and Galileo or BeiDou support by request to customize the GPS Antenna)</li> </ul>
Security	<ul style="list-style-type: none"> <li>– Kensington Lock Hole</li> <li>– TPM 2.0 (compliant with FIPS 140-2)</li> <li>– Optional Fingerprint scanner</li> </ul>
Power	<ul style="list-style-type: none"> <li>– AC Adapter Power Input: 100-240VAC, 50Hz-60Hz, Output: 19VDC, 65W</li> <li>– Optional Power Input: 100-240VAC, 50Hz-60Hz,</li> </ul>

	Output: 19VDC, 120W (120W AC Adapter is for Discrete Graphics SKU) – Battery: Main battery pack (3S2P (6-cell Li-Ion), 10.8V, 4,700mAh) / 2 <sup>nd</sup> battery pack (3S2P (6-cell Li-Ion), 10.8V, 4,700mAh) (optional)
Buttons	– Power ON / OFF Button – Two Programmable Buttons (P1 / P2)
Dimension	350 x 282 x 38mm (without Discrete VGA)
Weight	– 2.4kg (without Discrete VGA) – 2.9kg (with Discrete VGA)

**NOTE**

- Specifications are subject to change without any prior notice.

# Regulatory Statement

## Federal Communications Commission Statement

This equipment has been tested and found to comply with the limits for a Class B digital device, pursuant to Part 15 of the FCC Rules. These limits are designed to provide reasonable protection against harmful interference in a residential installation. This equipment generates, uses, and can radiate radio frequency energy and, if not installed and used in accordance with the instructions, may cause harmful interference to radio communications. However, there is no guarantee that interference will not occur in a particular installation. If this equipment does cause harmful interference to radio or television reception, which can be determined by turning the equipment off and on, the user is encouraged to try to correct the interference by one or more of the following measures:

- Reorient or relocate the receiving antenna.
- Increase the separation between the equipment and the receiver.
- Connect the equipment into an outlet on a circuit different from that to which the receiver is connected.
- Consult the dealer or an experienced radio/TV technician for help.

Shielded interconnect cables and shielded AC power cable must be employed with this equipment to insure compliance with the pertinent RF emission limits governing this device. Changes or modifications not expressly approved by the system's manufacturer could void the user's authority to operate the equipment.

## Declaration of Conformity

This device complies with part 15 of the FCC rules. Operation is subject to the following conditions:

- This device may not cause harmful interference
- This device must accept any interference received, including interference that may cause undesired operation.

## **RF exposure warning**

This equipment must be installed and operated in accordance with provided instructions and must not be co-located or operating in conjunction with any other antenna or transmitter. End-users and installers must be provided with antenna installation instructions and transmitter operating conditions for satisfying RF exposure compliance.

The SAR limit set by the FCC is 1.6W/kg.

This device is operation in 5.15 – 5.25GHz frequency range, then restricted in indoor use only. Outdoor operations in the 5150~5250MHz is prohibited.

This device is slave equipment, the device is not radar detection and not ad-hoc operation in the DFS band.

Note: Do not disassemble the bumper. Otherwise, the antenna may be damaged, resulting in poor reception.

## **Battery Disposal**

THIS PRODUCT CONTAINS A LITHIUM-ION OR NICKEL-METAL HYDRIDE BATTERY. IT MUST BE DISPOSED OF PROPERLY. CONTACT LOCAL ENVIRONMENTAL AGENCIES FOR INFORMATION ON RECYCLING AND DISPOSAL PLANS IN YOUR AREA.

## **WARNING EXPLOSION HAZARD**

**Class I, Division 2, Groups A, B, C, D, T Code T5**

**Class I, Zone 2, Groups IIC, T5**

WARNING - EXPLOSION HAZARD. DO NOT CONNECT OR REMOVE WHEN IN HAZARDOUS AREA. MAKE SURE ALL COVERS SECURED IN PLACE BEFORE USE.

AVERTISSEMENT – RISQUE D'EXPLOSION. NE PAS CONNECTER OU RETIRER DANS UNE ZONE DANGEREUSE. S'ASSURER QUE TOUS LES CAPOTS SONT FIXÉS EN PLACE AVANT UTILISATION.

Main Battery: J.S. Power CO., LTD, P/N: X11BK-M

## CLASS 1 LASER PRODUCT

### LASERSCHUTZKLASSE 1 PRODUKT TO EN60825

**CAUTION** THIS APPLIANCE CONTAINS A LASER SYSTEM AND IS CLASSIFIED AS A "CLASS 1 LASER PRODUCT." TO USE THIS MODEL PROPERLY, READ THE INSTRUCTION MANUAL CAREFULLY AND KEEP THIS MANUAL FOR FUTURE REFERENCE. IN CASE OF ANY TROUBLE WITH THIS MODEL, PLEASE CONTACT YOUR NEAREST "AUTHORIZED SERVICE STATION." TO PREVENT DIRECT EXPOSURE TO THE LASER BEAM, DO NOT TRY TO OPEN THIS ENCLOSURE.

## PRODUIT LASER DE CLASSE 1

### LASERSCHUTZKLASSE 1 PRODUKT TO EN60825

**ATTENTION :** CE PRODUIT CONTIENT UN SYSTÈME LASER ET EST CLASSÉ EN TANT QUE « PRODUIT LASER DE CLASSE 1 ». POUR UTILISER CE MODÈLE CORRECTEMENT, LISEZ LE MANUEL D'INSTRUCTIONS ATTENTIVEMENT ET CONSERVEZ-LE POUR RÉFÉRENCE FUTURE. EN CAS DE PROBLÈMES AVEC CE MODÈLE, VEUILLEZ CONTACTER VOTRE « STATION DE SERVICE AUTORISÉE » LA PLUS PROCHE. POUR ÉVITER UNE EXPOSITION DIRECTE AUX FAISCEAUX LASER, N'ESSEYER PAS D'OUVRIR CE BOÎTIER.

### ***ANNEX IV***

#### **Symbol for the marking of electrical and electronic equipment**

The symbol indicating separate collection for electrical and electronic equipment consists of the crossed-out wheeled bin, as shown below. The symbol must be printed visibly, legibly and indelibly.



---

## CAUTION FOR ADAPTER

THIS NOTEBOOK IS FOR USE WITH DEDICATED AC ADAPTER.

- Ensure you connect the power cord to a socket-outlet with earthing connection.
- The NB must be powered by using UL62368-1/ UL60950-1 Listed power adapter, rated 19Vdc, 4.74A minimum.
- **WARNING!**  
To reduce potential safety issues, only the AC adapter provided with the product, a replacement AC adapter provided by Pokini, or an AC adapter purchased as an accessory from Pokini should be used with the product.

## AVERTISSEMENT CONCERNANT L'ADAPTATEUR

LE ORDINATEUR PORTABLE DOIT ÊTRE UTILISÉE AVEC UN ADAPTATEUR SECTEUR CA DÉDIÉ.

## BATTERY SAFETY

DANGER OF EXPLOSION IF BATTERY IS INCORRECTLY REPLACED.

REPLACE ONLY WITH THE SAME OR EQUIVALENT TYPE RECOMMENDED BY THE MANUFACTURER. DISPOSE OF USED BATTERIES ACCORDING TO THE MANUFACTURER'S INSTRUCTIONS.

- replacement of a battery with an incorrect type that can defeat a safeguard (for example, in the case of some lithium battery types);
- disposal of a battery into fire or a hot oven, or mechanically crushing or cutting of a battery, that can result in an explosion;
- leaving a battery in an extremely high temperature surrounding environment that can result in an explosion or the leakage of flammable liquid or gas;
- a battery subjected to extremely low air pressure that may result in an explosion or the leakage of flammable liquid or gas.

## SÉCURITÉ DES PILES

DANGER D'EXPLOSION SI LA PILE EST MAL REMPLACÉE.

REMPLACEZ LA PILE UNIQUEMENT PAR UNE AUTRE DU MÊME TYPE, OU D'UN TYPE ÉQUIVALENT CONSEILLÉ PAR LE FABRICANT. REJETEZ LES PILES USÉES CONFORMÉMENT AUX INSTRUCTIONS DU FABRICANT.

## CAUTION FOR RJ-45

The RJ-45 jack is not used for telephone line connections.

## AVERTISSEMENT POUR RJ-45

N'utilisez pas la prise RJ-45 pour une connexion à la ligne téléphonique.



# Safety Instructions

These safety instructions should always be observed to ensure safe operation when handling the device.

- Do not place this device on an unstable table or surface. The device may fall, causing serious damage to its housing and components.
- Do not cover the device, or block the air ventilation holes of the device with any other objects.
- Do not use any sharp objects to tap on the display screen.
- Do not expose the device to direct sunlight and dusty environments.
- Keep the device away from excessive heat and humidity.
- Keep liquids away from the device.
- Keep the device away from any magnetic emitting devices as this may affect the quality of the wireless signal reception.
- When using an AC adapter:
  - ✓ Place this device in a location that is close enough to an electrical outlet to accommodate the length of the power cord and in order to turn off the power conveniently.
  - ✓ Operate this device only with the type of power source indicated on the device marking label.
  - ✓ Disconnect the AC adapter from the electrical outlet if the device is not being used for an extended period of time.
- When cleaning the device,
  - ✓ Be sure to turn off the device properly and unplug the AC adapter before cleaning.
  - ✓ Wipe the device with a clean, dry cloth.
  - ✓ Do not use abrasive cleaners to clean the device.
- Do not attempt to disassemble or repair this device. Doing so will void the warranty.

# Instructions de sécurité

Ces instructions de sécurité doivent toujours être suivies pour assurer le fonctionnement sûr de l'appareil lors de sa manipulation.

- Ne placez pas cet appareil sur une table ou surface instable. L'appareil pourrait tomber et causer des dégâts sérieux à son boîtier et ses composants.
- Ne couvrez pas l'appareil, et ne bloquez pas les trous de ventilation avec d'autres objets.
- N'utilisez pas d'objet pointu pour appuyer sur l'écran.
- Ne placez pas l'appareil dans des environnements directement exposés au soleil ou poussiéreux.
- Gardez l'appareil à l'écart de la chaleur et de l'humidité.
- Gardez les liquides à l'écart de l'appareil.
- Gardez l'appareil à l'écart des appareils émettant des ondes électromagnétiques, car celles-ci peuvent affecter la réception du signal sans fil.
- Lors de l'utilisation d'un adaptateur secteur :
  - ✓ Placez l'appareil à un emplacement suffisamment proche d'une prise électrique pour prendre en charge la longueur du cordon d'alimentation.
  - ✓ Utilisez uniquement cet appareil avec le type d'alimentation électrique indiqué sur l'étiquette de l'appareil.
  - ✓ Débranchez l'adaptateur secteur de la prise électrique si vous ne prévoyez pas d'utiliser l'appareil pendant une période prolongée.
- Lors du nettoyage de l'appareil,
  - ✓ Veillez à éteindre l'appareil correctement et à débrancher l'adaptateur secteur avant le nettoyage.
  - ✓ Essuyez l'appareil avec un chiffon propre et sec.
  - ✓ N'utilisez pas de produits nettoyants abrasifs pour nettoyer l'appareil.
- Ne tentez pas de démonter ou réparer cet appareil. Ceci annulerait la garantie.